

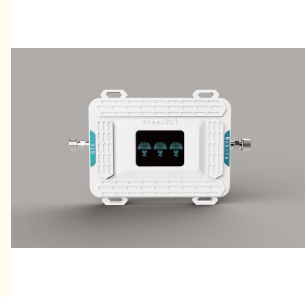
2G 3G 4G LTE Cell Booster 900/1800/2100mhz Mobile Phone Signal Booster

Our Product Introduction

for more products please visit us on signals-booster.com

Basic Information

- Place of Origin: Guangdong, China
- Brand Name: JIAYI
- Certification: ul/FCC ID/UKCA/ ISED-Category I CE-RED(ELECTRIC)
- Model Number: JY801
- Minimum Order Quantity: 2
- Packaging Details: 34*24*22
- Delivery Time: 5-7 work days
- Payment Terms: L/C, D/A, D/P, T/T, Western Union, MoneyGram
- Supply Ability: 99999



Product Specification

- Highlight: 2G 3G 4G LTE Cell Booster , 4G LTE Cell Booster 900mhz, 2100mhz Mobile Phone Signal Booster

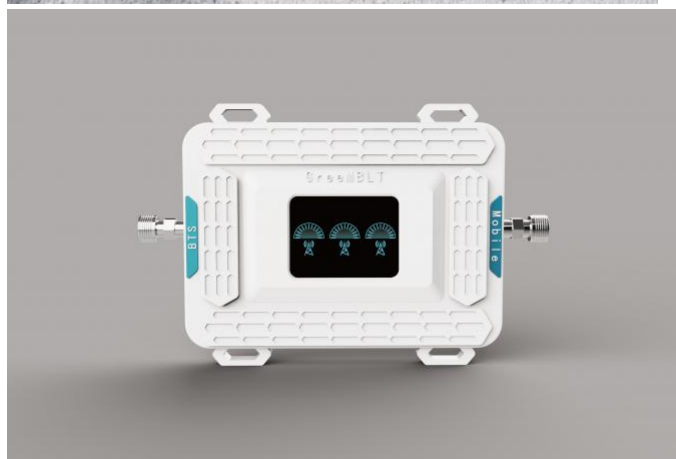
Product Description

Repeater 900/1800/2100mhz 2G 3G 4G Mobile LTE Signal Booster Amplifier

Product Description

Product Features

Full Band Coverage: Compatible with 2G, 3G, 4G, and 5G signals from all carriers, suitable for various mobile devices, and comprehensively enhancing signal quality.
High-Efficiency Signal Boosting: Utilizing the latest signal enhancement technology, it effectively covers an area of 2000 square feet, ensuring strong signal coverage whether at home, in the office, or in the basement.



- 1,High speed digital ALC system.
- 2,LCD Large screen display input/output real signal strength.
- 3,Uplink automatic shut off when device detected self-excitation.
- 4,Uplink noise elimination will not interference base station.
- 5,Small size, light weight, good looking, high gain, low power loss.
- 6,The signal booster has a brand patent protect
- 7,Custom frequencies from single frequency to five frequency are available

Specification

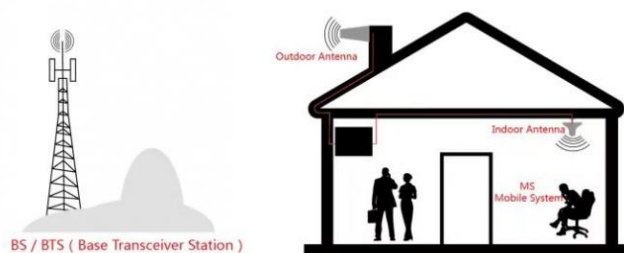
Electrical Specifications	
Model	JY801
Frequency Range-MHz	GSM900(2G): Uplink: 890-915MHz/Downlink: 935-960MHz DCS1800(4G): Uplink: 1710-1785MHz/Downlink: 1805-1880MHz WCDMA2100(3G): Uplink: 1920-1980MHz/Downlink: 2110-2170MHz
Network	GSM DCS WCDMA 2G 3G 4G
Gain-dBi	70±3DB
Power	≥ 20dBm

Max Output Power	+20dBm/±3DBM Total power
Impedance-Ω	50
Connector	N-Female Connector
Power Supply	AC 110-240V; DC 12V/2A
Coverage	1000sqm
Seclusion	<70dB
Compact Design	Indoor Use
Operating Temperature	-10 -60
Dimension(repeater host)	171mmx142.5mmx25mm
Package size	258mmx16mmx45mm
Package weight	1kg

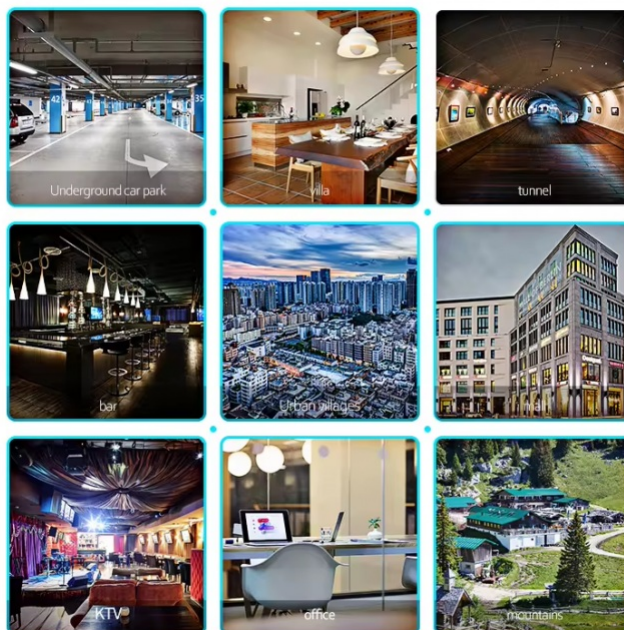
Instructions

Installation Method:

1. Find the strongest direction and position of the received signal for mobiles at the top or the periphery of the building, as the location for installing the outdoor antenna, pay attention that the location should be paid to lightning protection. The installation height should not be higher than the lightning protection network of the building. If it is higher than the lightning protection network. If it is necessary, install a lightning rod 1 meter above the outdoor antenna and ground it well.
2. After selecting the appropriate location, fix the outdoor antenna to the wall or bracket.
3. Select an appropriate location in the relevant indoor location (close to the power supply and the outdoor antenna end, rain-proof, sunshine-proof and ventilation is best location) install indoor straight machine, and fixed to the wall or bracket.
4. Lead the outdoor antenna to the 'BTS' (outdoor) interface, and the connection between the outdoor antenna and the amplifier is completed.
5. After defining the indoor antenna installation position, fix the antenna.
6. The indoor antenna connected to the amplifier, one port connecting to the indoor antenna interface, and the other port connecting to the repeater's 'MOBILE' (indoor) port.



WHERE TO USE



Package Contents

- Mobile Signal Booster Unit x 1
- Outdoor Antenna x 1
- Indoor Antenna x 1
- Coaxial Cable x 2
- Power Adapter x 1
- Installation Guide x 1

Factory Building 407, Building B, No. 41, Lixin Road, Danzhutou Community, Nanwan Street, Longgang District,
Shenzhen City, Guangdong Province, PR China Zip 518000