



## 65dB 75dB 5G Signal Repeater Webost 5g Cell Booster For Home Office

Our Product Introduction

for more products please visit us on [signals-booster.com](http://signals-booster.com)

### Basic Information

- Place of Origin: Guangdong, China
- Brand Name: JIAYI
- Model Number: JY814



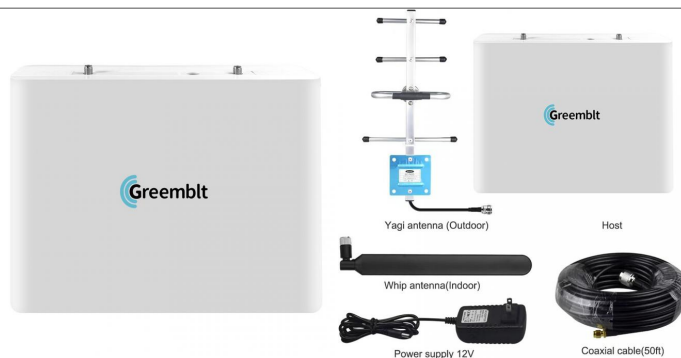
### Product Specification

- Highlight: 75dB 5G Signal Repeater,  
65dB 5G Signal Repeater,  
Webost 5g Cell Booster For Home

### Product Description

cell phone signal booster for cell phone signal booster for 5g booster webost home multiroom

#### Product Description



Our Product Introduction



## Specificatio

Model	JY814														
Technique	GSM		CDMA		DCS		WCDMA		TDD-LTE		FDD N66		TDD N77/N78		
Data	Uplink	Downlink	Uplink	Downlink	Uplink	Downlink	Uplink	Downlink	Uplink	Downlink	Uplink	Downlink	Uplink	Downlink	
Frequency Range(MHz)	824-835-890-915-935-960-178-180-188-190-192-198-210-217	869-880-915-935-960-178-180-188-190-192-198-210-217	890-915-935-960-178-180-188-190-192-198-210-217	890-915-935-960-178-180-188-190-192-198-210-217	1710-1785-1880-1920-1980-2170	1710-1785-1880-1920-1980-2170	2515-2575-2675-2700	2515-2575-2675-2700	1710-1785-1880-1920-1980-2170	2110-2170-2200-2270	3300-3360-3400-3470	4200-4260-4300-4370			
Max. Gain(dB)	65	75	65	75	65	75	65	75	65	70	65	70	65	70	
Max. Gain (dBm)	20±2		20±2		20±2		20±2		20±2		20±2		20±2		
Max. Output Power(dB)	≤6														
Intermodulation (dBc)	≤36														
VSWR	≤1.5														
RF Connector	N(F)														
power interface	DC5.5-2.1														
operating voltage	DC5V														
operating current	<2A														
input voltage	AC100~240V,50-60Hz														
Product size	210*55*160mm														
Package size	315*215*80mm														

## Installation

### Installation Instructions

**Installation Method:** 1. Find the strongest direction and position of the received signal for mobiles at the top or the periphery of the building, as the location for installing the outdoor antenna, pay attention that the location should be paid to lightning protection. The installation height should not be higher than the lightning protection network of the building. If it is higher than the lightning protection network. If it is necessary, install a lightning rod 1 meter above the outdoor antenna and ground it well. 2. After selecting the appropriate location, fix the outdoor antenna to the wall or bracket. 3. Select an appropriate location in the relevant indoor location (close to the power supply and the outdoor antenna end, rain-proof, sunshine-proof and ventilation is best location) install indoor straight machine, and fixed to the wall or bracket. 4. Lead the outdoor antenna to the 'BTS' (outdoor) interface, and the connection between the outdoor antenna and the amplifier is completed. 5. After defining the indoor antenna installation position, fix the antenna. 6. The indoor antenna connected to the amplifier, one port connecting to the indoor antenna interface, and the other port connecting to the repeater's 'MOBILE' (indoor) port.

## Installation diagram



# UNIVERSAL COVERAGE

INTELLIGENT AMPLIFICATION SIGNAL, SUITABLE FOR VARIOUS PLACES,  
SIGNAL INSTANT FULL GRID

...



• THE CITY



• CITIES AND TOWNS



• INTENSIVE FLOOR



• HIGH-RISE OFFICE BUILDING



• THE BASEMENT



• VILLA



• THE MOUNTAINS



• RURAL



Shenzhen Jiayi Technology Co., Ltd.



+86 18825260857



18825260857@163.com



signals-booster.com

Factory Building 407, Building B, No. 41, Lixin Road, Danzhotou Community, Nanwan Street, Longgang District,  
Shenzhen City, Guangdong Province, PR China Zip 518000