



Universal Cell Phone Booster 5W 10W 20W High Power Fiber Optical Repeater for Mobile Signal Network

Our Product Introduction

for more products please visit us on signals-booster.com

Basic Information

- Place of Origin: Guangdong, China
- Brand Name: Greemblt
- Model Number: JY825-43dBm-20W-Optical fiber far end
- Price: \$1,257.20/pieces 1-9 pieces
- Packaging Details: Normal package
- Supply Ability: 2000 Unit/Units per Month

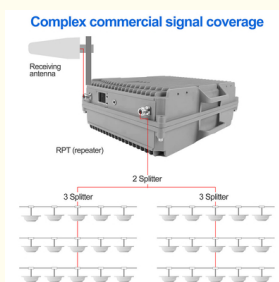


Product Specification

- Type: High Power 4g Signal Booster
- Network: 4g, GSM, 3G, WCDMA, DCS, 5g, CDMA, LTE, 10w Signal Repeater, 10 Watts Signal Repeater, Optical Fiber Signal Booster, Long Distance Signal Repeater, Outdoor Signal Repeater, High Gain Signal Repeater, High Power Signal Booster, Outdoor Signal Booster, 2g, P
- Gain: 100dbi
- Frequency: 900+1800+2600mHz Or Customized
- Output Power: 20W
- Cellular Networks: 2g/3g/4g LTE
- Operating Temperature: 10 -60
- Coverage Area: 80000 Square Meters
- Color: Gray
- Package Size: 42cm*40cm*30cm
- Package Weight: 25kg



More Images



Product Description

High Power Fiber Optical Repeater Mobile Signal Network 5W 10W 20W Amplifier Cellular Extender Universal Booster

Stronger Signals, Smoother Communication

We are professional manufacturer in this field for over 20 years.
This Model JY825 is our new-developed booster product.
Hope to be your very reliable partner to support greatest business successes!

What's new of our model JY825 ?

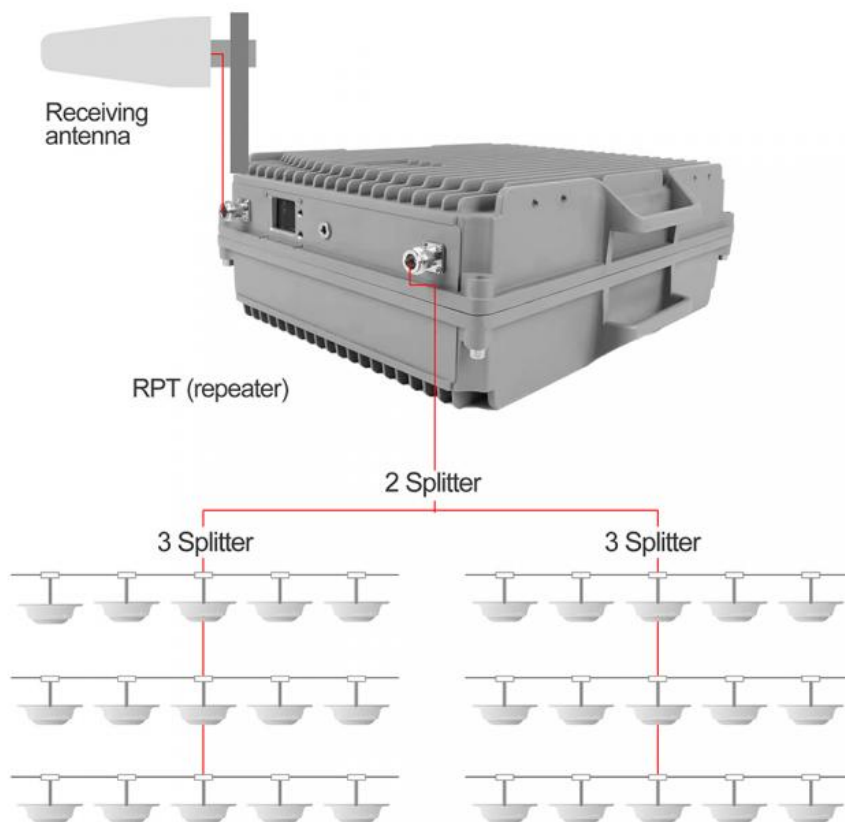
- Customizable frequency
- High performance, with ALC function
- Appearance design is technological and intelligent
- Possess product patents and brand design
- With FCC, CE and Rohs certification

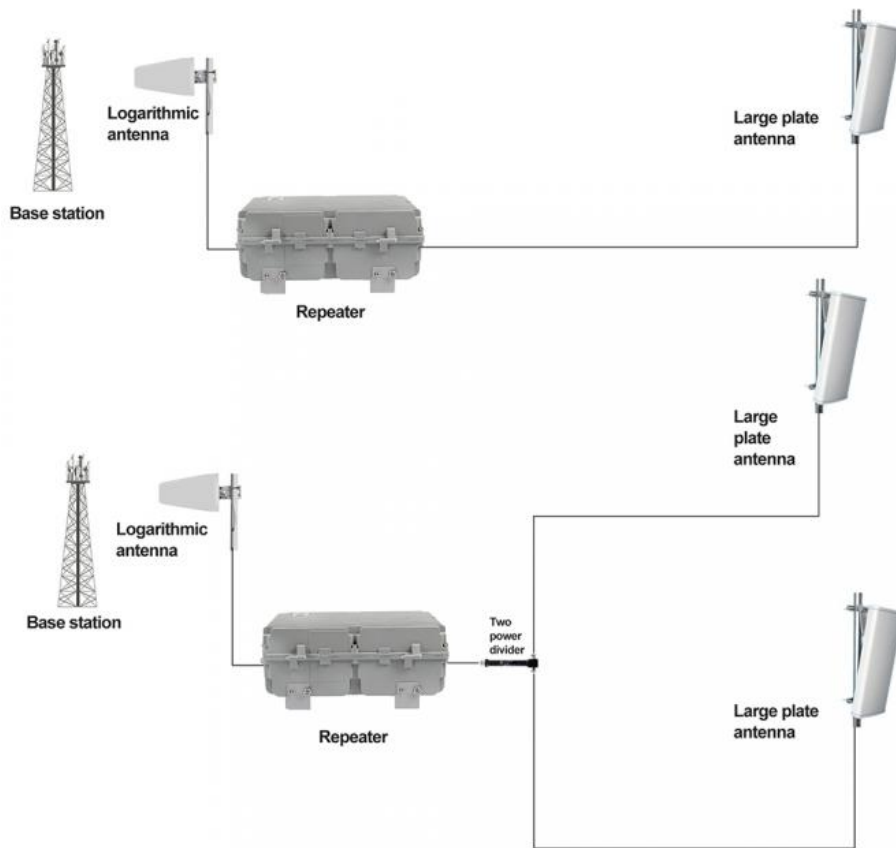
Product Description



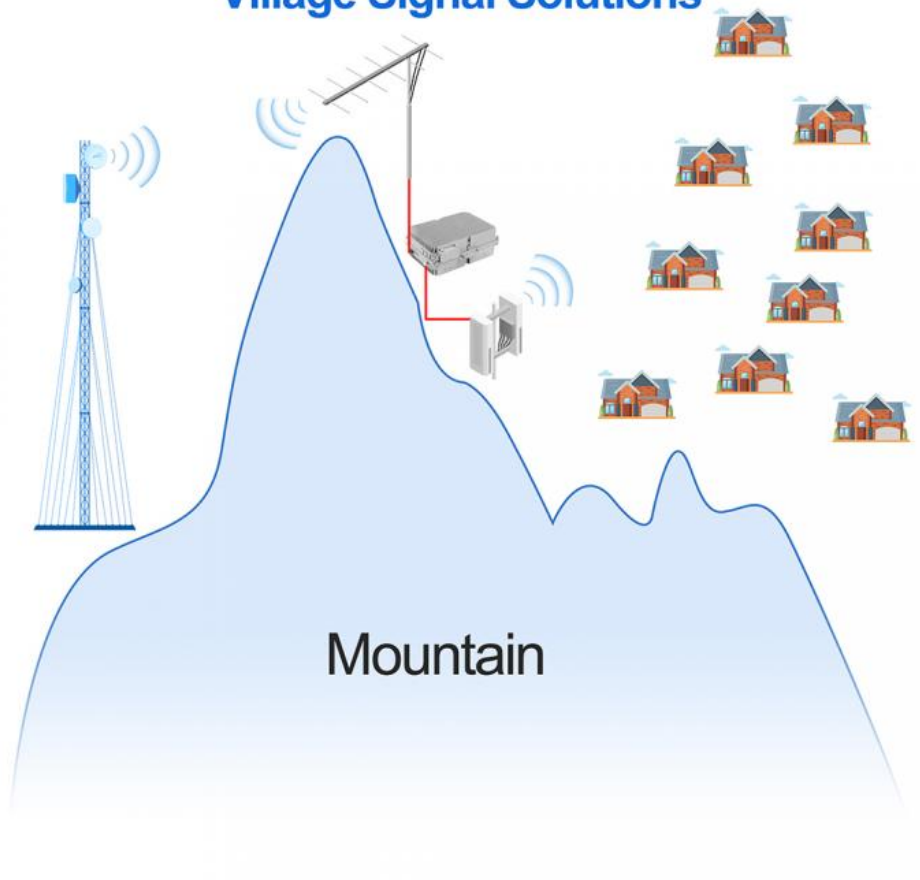


Complex commercial signal coverage





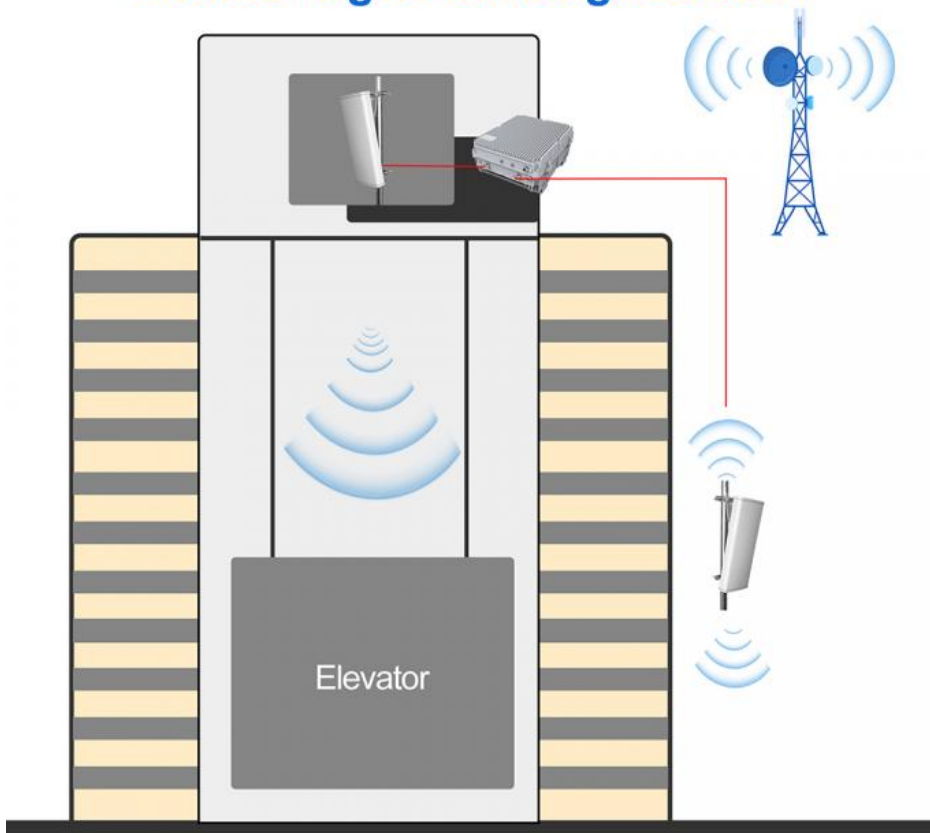
Village Signal Solutions



High building Signal Solutions



Elevator signal coverage solution



Villa signal coverage solution



Specification


Model	JY825	
Parameters of the project	Index requirements	
Frequency Range	Uplink	Downlink
700MHz	699-716MHz	729-726MHz
850MHz	824-849MHz	869-894MHz
800MHz	832-862MHz	791-821MHz
900MHz	880-915MHz	925-960MHz
1700MHz	1710-1755MHz	2100-2155MHz
1800MHz	1710-1785MHz	1805-1880MHz
1900MHz	1850-1910Mhz	1930-1990MHz
2100MHz	1920-1980MHz	2110-2170MHz
2600MHz	2500-2570MHz	2620-2690MHz
2300MHz	2300MHz	2400MHz
2500Mhz	2495MHz	2695MHz
3500MHZ	3300MHz	4200MHz
In-band intermodulation attenuation out-of-band (off-frequency)	S-36dBc/30Kz	
	9KHz-1GHz<-36dBm/100kHz	

CSM/DCS	Striped 2.1GHz-12.75GHz<-33dBm/IM2
Out-of-band inhibition of AB	<div> <div>2.5M</div> <div> <div>of</div> <div>fs</div> <div>et</div> <div>> 40</div> </div> </div> <div> <div>2.5M</div> <div> <div>of</div> <div>fs</div> <div>et</div> <div>> 60</div> </div> </div>
Maximum permissible input level (dBm)	10
Standing wave ratio of input and output voltage	S1.5
Time delay (us)	< 5
Time delay adjustment range (US)	> 100
Optical power (JBm)	9
Light Receiving Sensitivity (DBM)	20
Light transmission distance (km)	> 20
Power supply	Near and far end machine: AC220V±20%,50± 511Z
Size (mm)	Air coupling type proximal, distal: 460x380×180
Weight (kg)	Coupled near end and far end machines: <20
Monitor the way	RJ-45
The work environment	<div>1, working environment temperature :-20 ~55 ;</div> <div>2, working environment humidity: 15% ~ 95%</div> <div>3 pressure: 70-106KP:</div> <div>4, protection level: waterproof and dustproof performance in line with the 1P65 standard</div>


Company Profile

[illegible]

 CIRCLE CONSTRUCTION INDUSTRY RESEARCH & ANALYTICS	Receiver Letter Number (Circle File No.) 101-102-103-104-105-106-107-108-109-110-111-112-113-114-115-116-117-118-119-120-121-122-123-124-125-126-127-128-129-130-131-132-133-134-135-136-137-138-139-140-141-142-143-144-145-146-147-148-149-150-151-152-153-154-155-156-157-158-159-160-161-162-163-164-165-166-167-168-169-170-171-172-173-174-175-176-177-178-179-180-181-182-183-184-185-186-187-188-189-190-191-192-193-194-195-196-197-198-199-200-201-202-203-204-205-206-207-208-209-210-211-212-213-214-215-216-217-218-219-220-221-222-223-224-225-226-227-228-229-230-231-232-233-234-235-236-237-238-239-240-241-242-243-244-245-246-247-248-249-250-251-252-253-254-255-256-257-258-259-260-261-262-263-264-265-266-267-268-269-270-271-272-273-274-275-276-277-278-279-280-281-282-283-284-285-286-287-288-289-290-291-292-293-294-295-296-297-298-299-300-301-302-303-304-305-306-307-308-309-310-311-312-313-314-315-316-317-318-319-320-321-322-323-324-325-326-327-328-329-330-331-332-333-334-335-336-337-338-339-340-341-342-343-344-345-346-347-348-349-350-351-352-353-354-355-356-357-358-359-360-361-362-363-364-365-366-367-368-369-370-371-372-373-374-375-376-377-378-379-380-381-382-383-384-385-386-387-388-389-390-391-392-393-394-395-396-397-398-399-400-401-402-403-404-405-406-407-408-409-410-411-412-413-414-415-416-417-418-419-420-421-422-423-424-425-426-427-428-429-430-431-432-433-434-435-436-437-438-439-440-441-442-443-444-445-446-447-448-449-450-451-452-453-454-455-456-457-458-459-460-461-462-463-464-465-466-467-468-469-470-471-472-473-474-475-476-477-478-479-480-481-482-483-484-485-486-487-488-489-490-491-492-493-494-495-496-497-498-499-500-501-502-503-504-505-506-507-508-509-510-511-512-513-514-515-516-517-518-519-520-521-522-523-524-525-526-527-528-529-530-531-532-533-534-535-536-537-538-539-540-541-542-543-544-545-546-547-548-549-550-551-552-553-554-555-556-557-558-559-560-561-562-563-564-565-566-567-568-569-570-571-572-573-574-575-576-577-578-579-580-581-582-583-584-585-586-587-588-589-590-591-592-593-594-595-596-597-598-599-600-601-602-603-604-605-606-607-608-609-610-611-612-613-614-615-616-617-618-619-620-621-622-623-624-625-626-627-628-629-630-631-632-633-634-635-636-637-638-639-640-641-642-643-644-645-646-647-648-649-650-651-652-653-654-655-656-657-658-659-660-661-662-663-664-665-666-667-668-669-670-671-672-673-674-675-676-677-678-679-680-681-682-683-684-685-686-687-688-689-690-691-692-693-694-695-696-697-698-699-700-701-702-703-704-705-706-707-708-709-710-711-712-713-714-715-716-717-718-719-720-721-722-723-724-725-726-727-728-729-730-731-732-733-734-735-736-737-738-739-740-741-742-743-744-745-746-747-748-749-750-751-752-753-754-755-756-757-758-759-760-761-762-763-764-765-766-767-768-769-770-771-772-773-774-775-776-777-778-779-780-781-782-783-784-785-786-787-788-789-790-791-792-793-794-795-796-797-798-799-800-801-802-803-804-805-806-807-808-809-810-811-812-813-814-815-816-817-818-819-820-821-822-823-824-825-826-827-828-829-830-831-832-833-834-835-836-837-838-839-840-841-842-843-844-845-846-847-848-849-850-851-852-853-854-855-856-857-858-859-860-861-862-863-864-865-866-867-868-869-870-871-872-873-874-875-876-877-878-879-880-881-882-883-884-885-886-887-888-889-890-891-892-893-894-895-896-897-898-899-900-901-902-903-904-905-906-907-908-909-910-911-912-913-914-915-916-917-918-919-920-921-922-923-924-925-926-927-928-929-930-931-932-933-934-935-936-937-938-939-940-941-942-943-944-945-946-947-948-949-950-951-952-953-954-955-956-957-958-959-960-961-962-963-964-965-966-967-968-969-970-971-972-973-974-975-976-977-978-979-980-981-982-983-984-985-986-987-988-989-990-991-992-993-994-995-996-997-998-999-1000-1001-1002-1003-1004-1005-1006-1007-1008-1009-1010-1011-1012-1013-1014-1015-1016-1017-1018-1019-1020-1021-1022-1023-1024-1025-1026-1027-1028-1029-1030-1031-1032-1033-1034-1035-1036-1037-1038-1039-1040-1041-1042-1043-1044-1045-1046-1047-1048-1049-1050-1051-1052-1053-1054-1055-1056-1057-1058-1059-1060-1061-1062-1063-1064-1065-1066-1067-1068-1069-1070-1071-1072-1073-1074-1
---	--

 INTERNATIONAL JOURNAL OF ELECTRONICS Vol. 88		September 2001
<h2 style="text-align: center;"> Hindustan Jyoti Technologies Ltd. EMC REPORT </h2>		
Editorial	Research and Technology 1-106	
Editorial	System Building 107-124 EMC in Low Cost Design 125-130 Component Compatibility 131-134 EMC in the Design Process 135-140 EMC in the Design Process 141-146	
Editorial	EMC in the Design Process 147-152	
Editorial	System Building 153-160 EMC in Low Cost Design 161-166 Component Compatibility 167-170 EMC in the Design Process 171-176 EMC in the Design Process 177-182	
Editorial	EMC in the Design Process 183-188	
Editorial	EMC in the Design Process 189-194	
Editorial	EMC in the Design Process 195-200	
Editorial	EMC in the Design Process 201-206	
Editorial	EMC in the Design Process 207-212	
Editorial	EMC in the Design Process 213-218	
Editorial	EMC in the Design Process 219-224	
Editorial	EMC in the Design Process 225-230	
Editorial	EMC in the Design Process 231-236	
Editorial	EMC in the Design Process 237-242	
Editorial	EMC in the Design Process 243-248	
Editorial	EMC in the Design Process 249-254	
Editorial	EMC in the Design Process 255-260	
Editorial	EMC in the Design Process 261-266	
Editorial	EMC in the Design Process 267-272	
Editorial	EMC in the Design Process 273-278	
Editorial	EMC in the Design Process 279-284	
Editorial	EMC in the Design Process 285-290	
Editorial	EMC in the Design Process 291-296	
Editorial	EMC in the Design Process 297-302	
Editorial	EMC in the Design Process 303-308	
Editorial	EMC in the Design Process 309-314	
Editorial	EMC in the Design Process 315-320	
Editorial	EMC in the Design Process 321-326	
Editorial	EMC in the Design Process 327-332	
Editorial	EMC in the Design Process 333-338	
Editorial	EMC in the Design Process 339-344	
Editorial	EMC in the Design Process 345-350	
Editorial	EMC in the Design Process 351-356	
Editorial	EMC in the Design Process 357-362	
Editorial	EMC in the Design Process 363-368	
Editorial	EMC in the Design Process 369-374	
Editorial	EMC in the Design Process 375-380	
Editorial	EMC in the Design Process 381-386	
Editorial	EMC in the Design Process 387-392	
Editorial	EMC in the Design Process 393-398	
Editorial	EMC in the Design Process 399-404	
Editorial	EMC in the Design Process 405-410	
Editorial	EMC in the Design Process 411-416	
Editorial	EMC in the Design Process 417-422	
Editorial	EMC in the Design Process 423-428	
Editorial	EMC in the Design Process 429-434	
Editorial	EMC in the Design Process 435-440	
Editorial	EMC in the Design Process 441-446	
Editorial	EMC in the Design Process 447-452	
Editorial	EMC in the Design Process 453-458	
Editorial	EMC in the Design Process 459-464	
Editorial	EMC in the Design Process 465-470	
Editorial	EMC in the Design Process 471-476	
Editorial	EMC in the Design Process 477-482	
Editorial	EMC in the Design Process 483-488	
Editorial	EMC in the Design Process 489-494	
Editorial	EMC in the Design Process 495-500	
Editorial	EMC in the Design Process 501-506	
Editorial	EMC in the Design Process 507-512	
Editorial	EMC in the Design Process 513-518	
Editorial	EMC in the Design Process 519-524	
<		

[illegible][illegible][illegible]

	Registrar Joint Working Institutions Co., Ltd. 1st Floor, 100-101, 102, 103, 104, 105, 106, 107, 108, 109, 110, 111, 112, 113, 114, 115, 116, 117, 118, 119, 120, 121, 122, 123, 124, 125, 126, 127, 128, 129, 130, 131, 132, 133, 134, 135, 136, 137, 138, 139, 140, 141, 142, 143, 144, 145, 146, 147, 148, 149, 150, 151, 152, 153, 154, 155, 156, 157, 158, 159, 160, 161, 162, 163, 164, 165, 166, 167, 168, 169, 170, 171, 172, 173, 174, 175, 176, 177, 178, 179, 180, 181, 182, 183, 184, 185, 186, 187, 188, 189, 190, 191, 192, 193, 194, 195, 196, 197, 198, 199, 200, 201, 202, 203, 204, 205, 206, 207, 208, 209, 210, 211, 212, 213, 214, 215, 216, 217, 218, 219, 220, 221, 222, 223, 224, 225, 226, 227, 228, 229, 230, 231, 232, 233, 234, 235, 236, 237, 238, 239, 240, 241, 242, 243, 244, 245, 246, 247, 248, 249, 250, 251, 252, 253, 254, 255, 256, 257, 258, 259, 260, 261, 262, 263, 264, 265, 266, 267, 268, 269, 270, 271, 272, 273, 274, 275, 276, 277, 278, 279, 280, 281, 282, 283, 284, 285, 286, 287, 288, 289, 290, 291, 292, 293, 294, 295, 296, 297, 298, 299, 300, 301, 302, 303, 304, 305, 306, 307, 308, 309, 310, 311, 312, 313, 314, 315, 316, 317, 318, 319, 320, 321, 322, 323, 324, 325, 326, 327, 328, 329, 330, 331, 332, 333, 334, 335, 336, 337, 338, 339, 340, 341, 342, 343, 344, 345, 346, 347, 348, 349, 350, 351, 352, 353, 354, 355, 356, 357, 358, 359, 360, 361, 362, 363, 364, 365, 366, 367, 368, 369, 370, 371, 372, 373, 374, 375, 376, 377, 378, 379, 380, 381, 382, 383, 384, 385, 386, 387, 388, 389, 390, 391, 392, 393, 394, 395, 396, 397, 398, 399, 400, 401, 402, 403, 404, 405, 406, 407, 408, 409, 410, 411, 412, 413, 414, 415, 416, 417, 418, 419, 420, 421, 422, 423, 424, 425, 426, 427, 428, 429, 430, 431, 432, 433, 434, 435, 436, 437, 438, 439, 440, 441, 442, 443, 444, 445, 446, 447, 448, 449, 450, 451, 452, 453, 454, 455, 456, 457, 458, 459, 460, 461, 462, 463, 464, 465, 466, 467, 468, 469, 470, 471, 472, 473, 474, 475, 476, 477, 478, 479, 480, 481, 482, 483, 484, 485, 486, 487, 488, 489, 490, 491, 492, 493, 494, 495, 496, 497, 498, 499, 500, 501, 502, 503, 504, 505, 506, 507, 508, 509, 510, 511, 512, 513, 514, 515, 516, 517, 518, 519, 520, 521, 522, 523, 524, 525, 526, 527, 528, 529, 530, 531, 532, 533, 534, 535, 536, 537, 538, 539, 540, 541, 542, 543, 544, 545, 546, 547, 548, 549, 550, 551, 552, 553, 554, 555, 556, 557, 558, 559, 560, 561, 562, 563, 564, 565, 566, 567, 568, 569, 570, 571, 572, 573, 574, 575, 576, 577, 578, 579, 580, 581, 582, 583, 584, 585, 586, 587, 588, 589, 590, 591, 592, 593, 594, 595, 596, 597, 598, 599, 600, 601, 602, 603, 604, 605, 606, 607, 608, 609, 610, 611, 612, 613, 614, 615, 616, 617, 618, 619, 620, 621, 622, 623, 624, 625, 626, 627, 628, 629, 630, 631, 632, 633, 634, 635, 636, 637, 638, 639, 640, 641, 642, 643, 644, 645, 646, 647, 648, 649, 650, 651, 652, 653, 654, 655, 656, 657, 658, 659, 660, 661, 662, 663, 664, 665, 666, 667, 668, 669, 670, 671, 672, 673, 674, 675, 676, 677, 678, 679, 680, 681, 682, 683, 684, 685, 686, 687, 688, 689, 690, 691, 692, 693, 694, 695, 696, 697, 698, 699, 700, 701, 702, 703, 704, 705, 706, 707, 708, 709, 710, 711, 712, 713, 714, 715, 716, 717, 718, 719, 720, 721, 722, 723, 724, 725, 726, 727, 728, 729, 730, 731, 732, 733, 734, 735, 736, 737, 738, 739, 740, 741, 742, 743, 744, 745, 746, 747, 748, 749, 750, 751, 752, 753, 754, 755, 756, 757, 758, 759, 760, 761, 762, 763, 764, 765, 766, 767, 768, 769, 770, 771, 772, 773, 774, 775, 776, 777, 778, 779, 780, 781, 782, 783, 784, 785, 786, 787, 788, 789, 790, 791, 792, 793, 794, 795, 796, 797, 798, 799, 800, 801, 802, 803, 804, 805, 806, 807, 808, 809, 810, 811, 812, 813, 814, 815, 816, 817, 818, 819, 820, 821, 822, 823, 824, 825, 826, 827, 828, 829, 830, 831, 832, 833, 834, 835, 836, 837, 838, 839, 840, 841, 842, 843, 844, 845, 846, 847, 848, 849, 850, 851, 852, 853, 854, 855, 856, 857, 858, 859, 860, 861, 862, 863, 864, 865, 866, 867, 868, 869, 870, 871, 872, 873, 874, 875, 876, 877, 878, 879, 880, 881, 882, 883, 884, 885, 886, 887, 888, 889, 890, 891, 892, 893, 894, 895, 896, 897, 898, 899	
---	--	--

[illegible][illegible]

 McGraw-Hill		Engineering Engineering Engineering
INTERNET KEYWORD: ENGINEERING 1, 10		
Author: Dr. C. V. RAO		ISBN: 0-07-050100-0
Shenzhen Jint Technology Co., Ltd. FCC REPORT		
Manufacturer:	Shenzhen Jint Technology Co., Ltd.	
Model:	JTC-001/002/003/004/005/006/007/008/009/010/011/012/013/014/015/016/017/018/019/020/021/022/023/024/025/026/027/028/029/030/031/032/033/034/035/036/037/038/039/040/041/042/043/044/045/046/047/048/049/050/051/052/053/054/055/056/057/058/059/060/061/062/063/064/065/066/067/068/069/070/071/072/073/074/075/076/077/078/079/080/081/082/083/084/085/086/087/088/089/090/091/092/093/094/095/096/097/098/099/100/101/102/103/104/105/106/107/108/109/110/111/112/113/114/115/116/117/118/119/120/121/122/123/124/125/126/127/128/129/130/131/132/133/134/135/136/137/138/139/140/141/142/143/144/145/146/147/148/149/150/151/152/153/154/155/156/157/158/159/160/161/162/163/164/165/166/167/168/169/170/171/172/173/174/175/176/177/178/179/180/181/182/183/184/185/186/187/188/189/190/191/192/193/194/195/196/197/198/199/200/201/202/203/204/205/206/207/208/209/210/211/212/213/214/215/216/217/218/219/220/221/222/223/224/225/226/227/228/229/230/231/232/233/234/235/236/237/238/239/240/241/242/243/244/245/246/247/248/249/250/251/252/253/254/255/256/257/258/259/260/261/262/263/264/265/266/267/268/269/270/271/272/273/274/275/276/277/278/279/280/281/282/283/284/285/286/287/288/289/290/291/292/293/294/295/296/297/298/299/300/301/302/303/304/305/306/307/308/309/310/311/312/313/314/315/316/317/318/319/320/321/322/323/324/325/326/327/328/329/330/331/332/333/334/335/336/337/338/339/340/341/342/343/344/345/346/347/348/349/350/351/352/353/354/355/356/357/358/359/360/361/362/363/364/365/366/367/368/369/370/371/372/373/374/375/376/377/378/379/380/381/382/383/384/385/386/387/388/389/390/391/392/393/394/395/396/397/398/399/400/401/402/403/404/405/406/407/408/409/410/411/412/413/414/415/416/417/418/419/420/421/422/423/424/425/426/427/428/429/430/431/432/433/434/435/436/437/438/439/440/441/442/443/444/445/446/447/448/449/450/451/452/453/454/455/456/457/458/459/460/461/462/463/464/465/466/467/468/469/470/471/472/473/474/475/476/477/478/479/480/481/482/483/484/485/486/487/488/489/490/491/492/493/494/495/496/497/498/499/500/501/502/503/504/505/506/507/508/509/510/511/512/513/514/515/516/517/518/519/520/521/522/523/524/525/526/527/528/529/530/531/532/533/534/535/536/537/538/539/540/541/542/543/544/545/546/547/548/549/550/551/552/553/554/555/556/557/558/559/560/561/562/563/564/565/566/567/568/569/570/571/572/573/574/575/576/577/578/579/580/581/582/583/584/585/586/587/588/589/590/591/592/593/594/595/596/597/598/599/600/601/602/603/604/605/606/607/608/609/610/611/612/613/614/615/616/617/618/619/620/621/622/623/624/625/626/627/628/629/630/631/632/633/634/635/636/637/638/639/640/641/642/643/644/645/646/647/648/649/650/651/652/653/654/655/656/657/658/659/660/661/662/663/664/665/666/667/668/669/670/671/672/673/674/675/676/677/678/679/680/681/682/683/684/685/686/687/688/689/690/691/692/693/694/695/696/697/698/699/700/701/702/703/704/705/706/707/708/709/710/711/712/713/714/715/716/717/718/719/720/721/722/723/724/725/726/727/728/729/730/731/732/733/734/735/736/737/738/739/740/741/742/743/744/745/746/747/748/749/750/751/752/753/754/755/756/757/758/759/760/761/762/763/764/765/766/767/768/769/770/771/772/773/774/775/776/777/778/779/780/781/782/783/784/785/786/787/788/789/790/791/792/793/794/795/796/797/798/799/800/801/802/803/804/805/806/807/808/809/810/811/812/813/814/815/816/817/818/819/820/821/822/823/824/825/826/827/828/829/830/831/832/833/834/835/836/837/838/839/840/841/842/843/844/845/846/847/848/849/850/851/852/853/854/855/856/857/858/859/860/861/862/863/864/865/866/867/868/869/870/871/872/873/874/875/876/877/878/879/880/881/882/883/884/885/886/887/888/889/890/891/892/893/894/895/896/897/898/899/900/901/902/903/904/905/906/907/908/909/910/911/912/913/914/915/916/917/918/919/920/921/922/923/924/925/926/927/928/929/930/931/932/933/934/935/936/937/938/939/940/941/942/943/944/945/946/947/948/949/9	

[illegible]

Accessories & Installation



Search a location where can receive good signal ($\geq -70\text{dB}$).
Install outdoor antenna, towards to the base station or cell tower.



Connect indoor antenna to the booster "Mobile" side by cable.
(Outdoor antenna to the booster "BTS" side.)



Please check if all connectors are connected well after assembled.
And turn on the power.

Application

UNIVERSAL COVERAGE

INTELLIGENT AMPLIFICATION SIGNAL, SUITABLE FOR VARIOUS PLACES,
SIGNAL INSTANT FULL GRID

• • •



• THE CITY



• CITIES AND TOWNS



• INTENSIVE FLOOR



• HIGH-RISE OFFICE
BUILDING



• THE BASEMENT



• VILLA



• THE MOUNTAINS




• RURAL

 **Shenzhen Jiayi Technology Co., Ltd.**

 +86 18825260857

 18825260857@163.com

 signals-booster.com

Factory Building 407, Building B, No. 41, Lixin Road, Danzhutou Community, Nanwan Street, Longgang District,
Shenzhen City, Guangdong Province, PR China Zip 518000