



## 37dBm Mobile Signal Amplifier for High Power Cellular Networks 2G/3G/4G LTE Coverage

Our Product Introduction

for more products please visit us on [signals-booster.com](http://signals-booster.com)

### Basic Information

- Place of Origin: Guangdong, China
- Brand Name: Greemblt
- Model Number: JY825-37dBm-5W-Optical fiber far end
- Price: \$971.50/pieces 1-9 pieces
- Packaging Details: Normal package
- Supply Ability: 2000 Unit/Units per Month

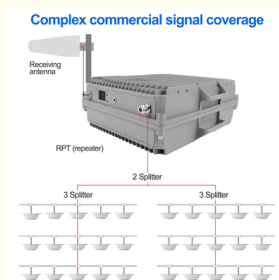


### Product Specification

- Type: High Power 4g Signal Booster
- Network: 4g, GSM, 3G, WCDMA, DCS, 5g, CDMA, LTE, 10w Signal Repeater, 10 Watts Signal Repeater, Optical Fiber Signal Booster, Long Distance Signal Repeater, Outdoor Signal Repeater, High Gain Signal Repeater, High Power Signal Booster, Outdoor Signal Booster, 2g, P
- Gain: 90dbi
- Frequency: 1800+2100+2600mHz Or Customized
- Output Power: 5W
- Cellular Networks: 2g/3g/4g LTE
- Operating Temperature: 10 -60
- Coverage Area: 20000 Square Meters
- Color: Gray
- Package Size: 42cm\*40cm\*30cm
- Package Weight: 16kg



### More Images



## Product Description

**New High Power 37dBm 5W Fiber Optical Repeater Mobile Signal Network Amplifier  
Cellular Extender Network Booster Network Signal Booster**

### Stronger Signals, Smoother Communication

We are professional manufacturer in this field for over 20 years.  
This Model JY825 is our new-developed booster product.  
Hope to be your very reliable partner to support greatest business successes!

What's new of our model JY825 ?

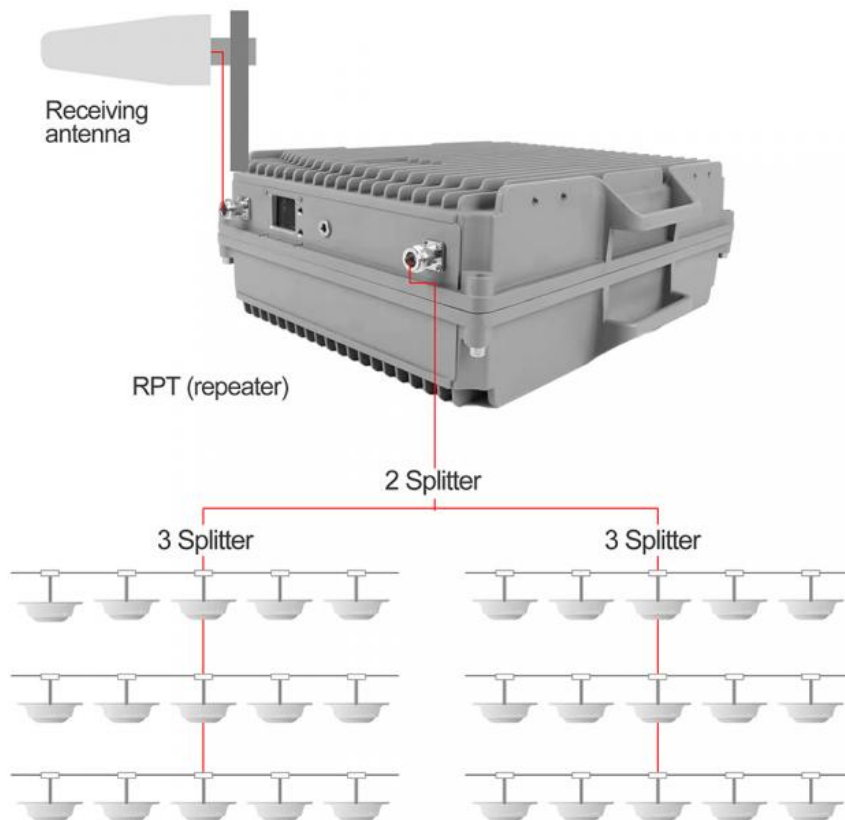
- Customizable frequency
- High performance, with ALC function
- Appearance design is technological and intelligent
- Possess product patents and brand design
- With FCC, CE and Rohs certification

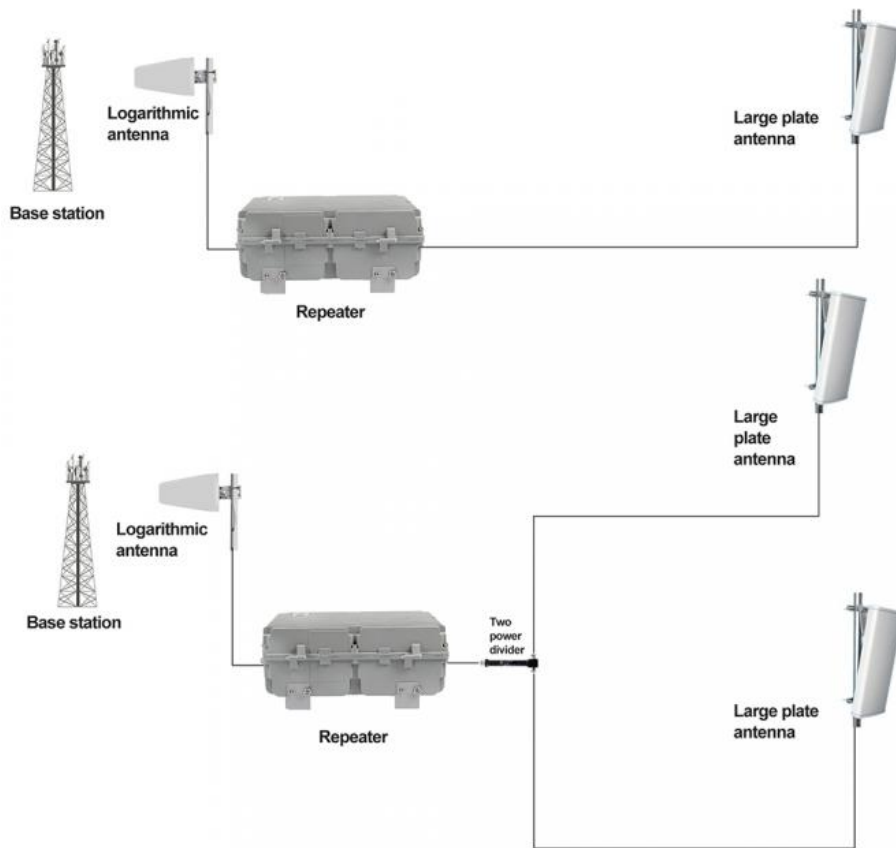
### Product Description



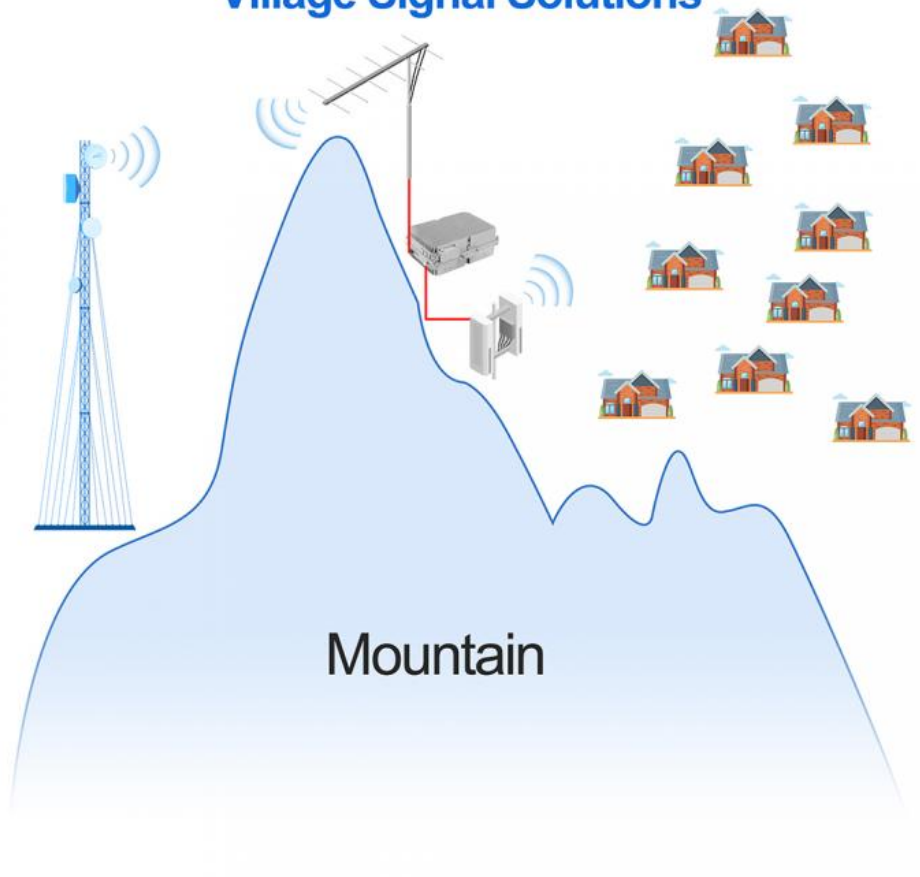


## Complex commercial signal coverage





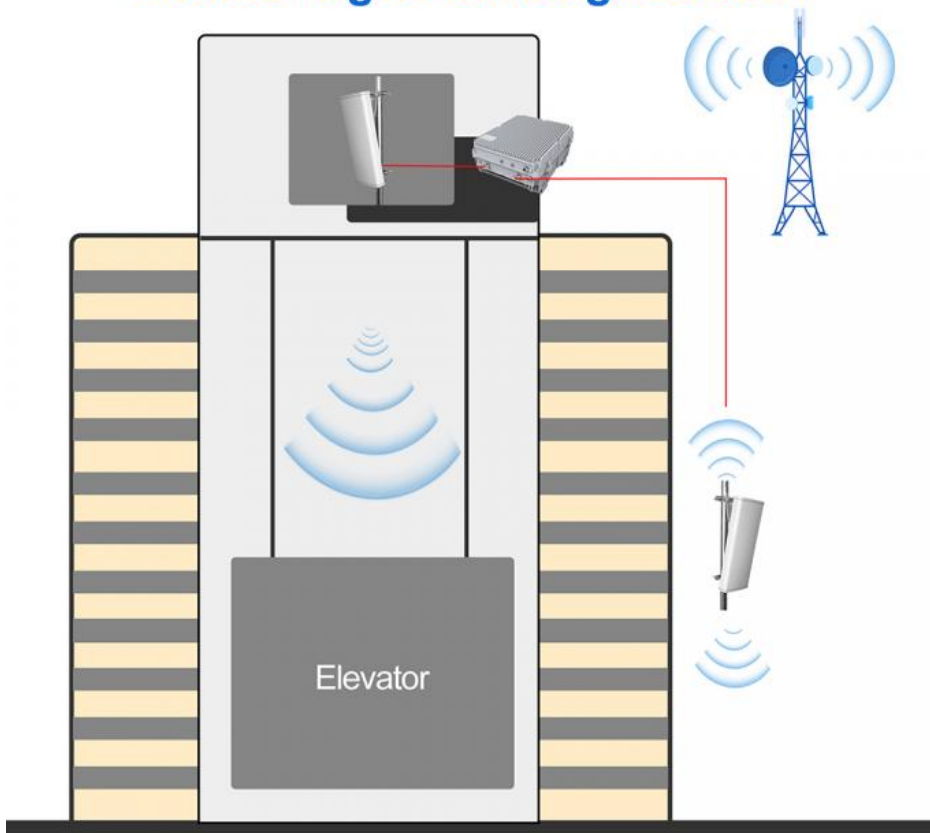
## Village Signal Solutions



## High building Signal Solutions



## Elevator signal coverage solution



## Villa signal coverage solution



### Specification

|   |                         |              |
|---|-------------------------|--------------|
| Model   | JY825                   |              |
| Parameters of the project                                       | Index requirements      |              |
| Frequency Range   | Uplink                  | Downlink     |
| 700MHz  | 699-716MHz              | 729-726MHz   |
| 850MHz  | 824-849MHz              | 869-894MHz   |
| 800MHz  | 832-862MHz              | 791-821MHz   |
| 900MHz  | 880-915MHz              | 925-960MHz   |
| 1700MHz   | 1710-1755MHz            | 2100-2155MHz |
| 1800MHz   | 1710-1785MHz            | 1805-1880MHz |
| 1900MHz   | 1850-1910Mhz            | 1930-1990MHz |
| 2100MHz   | 1920-1980MHz            | 2110-2170MHz |
| 2600MHz   | 2500-2570MHz            | 2620-2690MHz |
| 2300MHz   | 2300MHz                 | 2400MHz      |
| 2500Mhz   | 2495MHz                 | 2695MHz      |
| 3500MHZ   | 3300MHz                 | 4200MHz      |
| In-band intermodulation attenuation out-of-band (off-frequency) | S-36dBc/30Kz            |              |
|   | 9KHz-1GHz<-36dBm/100kHz |              |
|   |                         |              |

|   |  |
|---|--|
| CSM/DCS   | Striped<br>2.1GHz-12.75GHz<-33dBm/IM2  |
| Out-of-band inhibition of AB                    | <div> <div> <div>2.5M</div> <div>of</div> <div>fs</div> <div>&gt; 40</div> </div> <div> <div>&lt;</div> <div>s</div> <div>&lt;</div> <div>5M</div> <div>z</div> </div> </div> <div> <div>2.5M</div> <div>z</div> <div>S</div> <div>f</div> <div>&gt; 60</div> <div>of</div> <div>fs</div> <div>et</div> </div> |
| Maximum permissible input level (dBm)           | 10   |
| Standing wave ratio of input and output voltage | S1.5   |
| Time delay (us)                                 | < 5  |
| Time delay adjustment range (US)                | > 100  |
| Optical power (JBm)                             | 9  |
| Light Receiving Sensitivity (DBM)               | 20   |
| Light transmission distance (km)                | > 20   |
| Power supply                                    | Near and far end machine:<br>AC220V±20%,50± 511Z   |
| Size (mm)                                       | Air coupling type proximal, distal:<br>460x380×180   |
| Weight (kg)                                     | Coupled near end and far end<br>machines: <20  |
| Monitor the way                                 | RJ-45  |
| The work environment                            | <div>1, working environment<br/>temperature :-20 ~55 ;</div> <div>2, working environment humidity:<br/>15% ~ 95%</div> <div>3 pressure: 70-106KP:</div> <div>4, protection level: waterproof and<br/>dustproof performance in line with<br/>the 1P65 standard</div>  |

## Company Profile





Shenzhen JIAYI Technology Company, a leading manufacturer of signal amplifiers, located in Shenzhen China, over the past 10 years, its signal amplifier products have been exported to North America, Europe, the Middle East and Asia. Our main focus is on Micropower repeaters, Signal booster, Wifi repeater, Antenna Series, Passive Components. With professional engineers, workers, and with senior management personnel, the group maintained high-speed development. Meanwhile, the Up-to-date facilities and technology ensure the business's long-term development. With the development of facilities and technology, JIAYI Technology Company expands its business scope to cooperate with signal operators, provide signal coverage solutions for large areas like residential areas, area on mountain, office buildings, tunnels, supermarkets, underground garages, and rural areas. 5G signal booster was developed and put on the market successfully. In the future, easier use and more functional signal boosters have been developed.

### ■ Workshop Display





# Certifications & Awards



## Accessories & Installation



Search a location where can receive good signal ( $\geq -70\text{dB}$ ).  
Install outdoor antenna, towards to the base station or cell tower.



Connect indoor antenna to the booster "Mobile" side by cable.  
(Outdoor antenna to the booster "BTS" side.)



Please check if all connectors are connected well after assembled.  
And turn on the power.

**Application**

# UNIVERSAL COVERAGE

INTELLIGENT AMPLIFICATION SIGNAL, SUITABLE FOR VARIOUS PLACES,  
SIGNAL INSTANT FULL GRID

...



• THE CITY



• CITIES AND TOWNS



• INTENSIVE FLOOR



• HIGH-RISE OFFICE BUILDING



• THE BASEMENT



• VILLA



• THE MOUNTAINS



• RURAL

## Packing & Delivery

### PACKAGING CHOICE

We will pack the products carefully and safely deliver them to your hands.  
Our express can be sent to various places and can be delivered.



## FAQ

### FAQ :

**Q1:** What countries is this mobile signal amplifier suitable for?

**A:** Our mobile signal amplifier is compatible with usage in various countries and regions worldwide. Regardless of your location, you can enjoy enhanced signal coverage.

**Q2:** Does installing this signal amplifier require professional skills?

**A:** No professional skills are necessary. We provide a detailed installation guide with simple and clear steps. If you encounter any issues, our customer service team is always ready to assist you.



**Q3:** Does this amplifier support 4G/LTE signals?

**A:** Yes, our mobile signal amplifier supports not only 2G and 3G signals but also 4G/LTE networks, ensuring improved signal quality in various network environments.

**Q4:** Can it be used for multiple phones simultaneously?

**A:** Yes, our signal amplifier can simultaneously support multiple phones, tablets, and other devices, providing stronger signals, whether you're at home or in the office.

**Q5:** Will the signal improvement be immediately noticeable after installing the amplifier?

**A:** Yes, once the amplifier is installed and set up according to the guide, you should experience an immediate enhancement in signal quality. However, ensure you install the amplifier in an appropriate location for optimal results.

**Q6:** Are additional accessories needed to complete the installation?

**A:** We provide a complete set of installation accessories, so you typically don't need to purchase additional items. Everything is included in our package to ensure a smooth installation process.

**Q7:** Is this amplifier legal?

**A:** Our mobile signal amplifier complies with international telecommunications standards and is legal for use in various countries. However, please note that you might need specific licenses or approvals in certain regions.

**Q8:** Can this amplifier be used in vehicles?

**A:** Yes, our mobile signal amplifier is suitable for use inside vehicles. It can enhance your signal while traveling, ensuring better connectivity on your journeys.

**Q9:** How are post-sales issues or warranties handled?

**A:** We offer a limited product warranty period, and if you encounter any problems during usage, feel free to contact our customer service team. We are dedicated to resolving any post-sales issues you may have.

**Q10:** Is this mobile signal amplifier suitable for large commercial spaces?

**A:** Yes, our signal amplifier is suitable not only for homes and small offices but also for large commercial spaces such as hotels, conference centers, and warehouses. We have different amplifier models to meet various signal range requirements.

## Why Choose Us

### Our Customers



## We stand ready to assist

### Contact Us

**Rita Xie**

Manager of Sales Department

Shenzhen Jiayi Technology Co., Ltd.



**Greemblt**  
www.greemblt.com

+86 15919436067  
+86 15919436067  
rita@jiayi-technology.com

Factory Building 407, Building B, No. 41, Lixin Road, Danzhotou Community, Nanwan Street, Longgang District, Shenzhen City, Guangdong Province



 **Shenzhen Jiayi Technology Co., Ltd.**



+86 18825260857



18825260857@163.com



signals-booster.com

Factory Building 407, Building B, No. 41, Lixin Road, Danzhutou Community, Nanwan Street, Longgang District,  
Shenzhen City, Guangdong Province, PR China Zip 518000