



24-month High Power 80dB 900/1800/2100MHz Signal Booster for 2G/3G/4G Mobile Phones

Our Product Introduction

for more products please visit us on signals-boosters.com

Basic Information

- Place of Origin: Guangdong, China, Guangdong China
- Brand Name: JIAYI, JIAYI
- Model Number: JY811, JY811
- Price: \$419.00/sets 1-9 sets
- Packaging Details: Normal packing

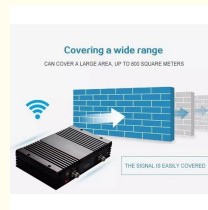


Product Specification

- Type: Signal Booster
- Network: 4g, GSM, 3G
- Gain: 75-80dB
- Application: Office/ Home
- Output Power: 27dbm
- Package Size: 45cm*35cm*25cm
- Warranty: 2 Years
- Coverage: 1000sqm
- Quality Warranty: 24month
- Highlight: 2100mhz signal booster, 80db signal booster, 80db network booster



More Images



Product Description

Dear Friend Welcome to our shop, hope you have a good shopping ! All of our products already checked with QC Before send out, and normally instock . All of our products can use for all over the world just match the frequency. Wholesale Consumer Pls contact us before your order, Because we will give the best price to you. Our products have good sale in Aliexpress. The frequency for you choose, Support OEM, ODM. Support frequency customization, To choose from, we have single frequency dual frequency tri-band frequency quad frequency five frequency device , high power high Please contact us if you have any need. gain device, with AGC ALG device...

Single band frequency

900,1800,2100,FDD2600,850,800,700,1900,1700,TDD2600,TDD2300 ,TDD1900

Dual band frequency

900/1800,900/2100 1800/2600,850/1900,800/1800,850/1700,1800/2100,900/2300,1800/2300,1700/2100

Triband frequency

900/1800/2100,850/1800/2100,900/1800/2600,900/2100/2600,1800/2100/2600

Our Product Introduction





Product detail



Covering a wide range

CAN COVER A LARGE AREA, UP TO 800 SQUARE METERS



Specification

Frequency Range		Uplink	Downlink
LTE 800MHz		832-862MHz	791-821MHz
GSM900MHz		890-915MHz	935-960MHz
1800MHz		1710-1785MHz	1805-1880MHz
2100MHz		1920-1980MHz	2110-2170MHz
2600MHz		2500-2570MHz	2630-2690MHz
Max. Gain		75dB ±1.5dB	80dB±1.5dB
Max. Output Power		22dBm±1.5dB	27dBm±1.5dB
Band width		Wide Band	
Manual Gain Control		31dB	
ALC		>25dB	
Ripple in Band		≤ 8dB	
Noise Figure		≤ 6dB	
VSWR		≤ 2.0	
Intermodulation		≤ -40dBc	
Spurious Emission	9KHz~1GHz	≤ -36dBm	
	1~12.75GHz	≤ -30dBm	
Time Delay		≤ 1.5 μs	
Frequency stability		≤ 0.01ppm	
MTBF		> 50000 hours	
Impedance		50 ohm	
Power Supply		AC 90-264V,DC 10V/10A	
Power LED		Power indicator	
Alarm LED	Red	Self oscillation or Strong input signal	
	Green	Normal	
Mechanical Specification			
RF Connector		N-Female	
Switch		Power Switch、 Manual Gain Control Switch	
Cooling		Heatsink Convection cooling	
Humidity		< 90%	
Operating Temperature		-10°C ~ +55°C	
Environment Conditions		IP40	
Installation Type		Wall Installation	
Size		439*268*58mm	
Weight		< 8.5Kg	

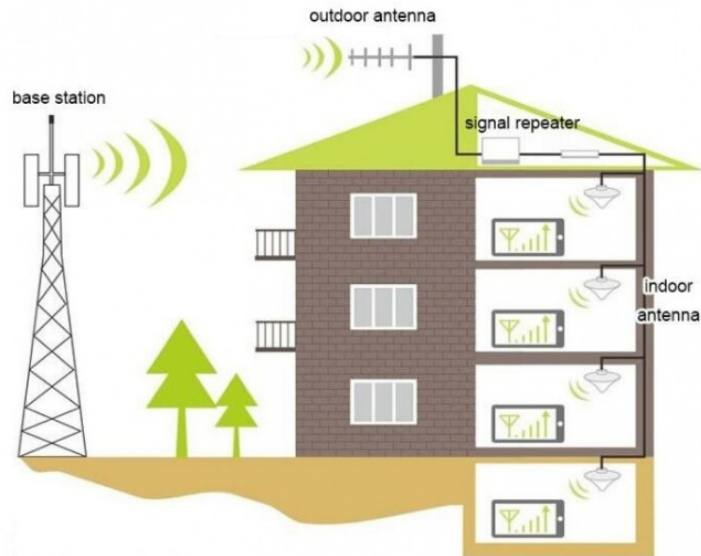
Accessories



Packing list	
Item	Quantity(pcs)
Repeater	1pcs
Logarithm Outdoor antenna	1pcs
Ceiling antenna	1pcs
Cable 10 meters	1pcs
Cable 3 meters	1pcs
Adapter	1pcs

Installation Instructions

Installation



Installation Method:

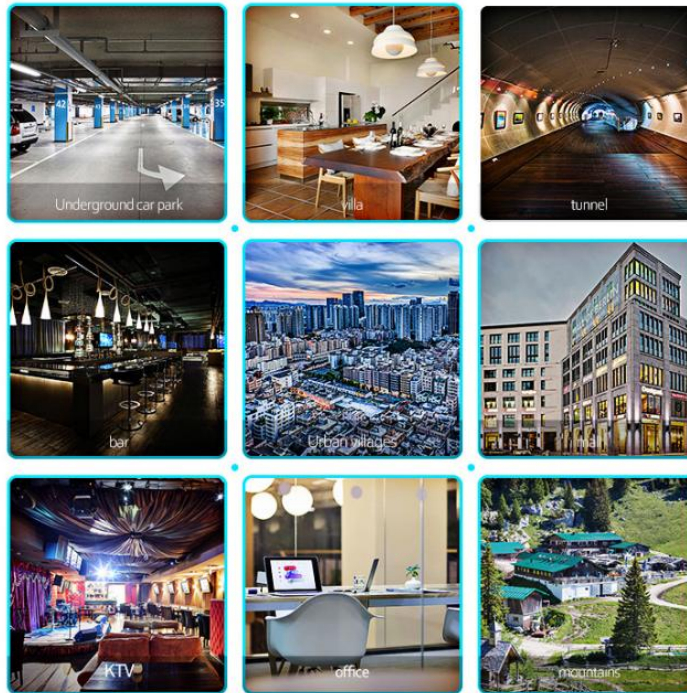
1. Find the strongest direction and position of the received signal for mobiles at the top or the periphery of the building, as the location for installing the outdoor antenna, pay attention that the location should be paid to lightning protection. The installation height should not be higher than the lightning protection network of the building. If it is higher than the lightning protection network. If it is necessary, install a lightning rod 1 meter above the outdoor antenna and ground it well. 2. After selecting the appropriate location, fix the outdoor antenna to the wall or bracket. 3. Select an appropriate location in the relevant indoor location (close to the power supply and the outdoor antenna end, rain-proof, sunshine-proof and ventilation is best location) install indoor straight machine, and fixed to the wall or bracket. 4. Lead the outdoor antenna to the 'BTS' (outdoor) interface, and the connection between the outdoor antenna and the amplifier is completed. 5. After defining the indoor antenna installation position, fix the antenna. 6. The indoor antenna connected to the amplifier, one port connecting to the indoor antenna interface, and the other port connecting to the repeater's 'MOBILE' (indoor) port.

Packing & Delivery



Application

WHERE TO USE



Company Profile

ABOUT JIA YI



Shenzhen Jiayi Communication Technology Co., LTD. Has been in the communication industry for 20 years. We have a strong design and development of signal amplifier technology, the production of signal amplifier manufacturing capacity. Can solve Europe and the United States. Asia, the Middle East and other regions poor mobile signal problem, with strong technology, quality products, service customers around the world, to solve the problem of numerous customers mobile phone no network signal, poor network signal, our company will continue to research and development, innovation. In the 5G era, our 5G mobile signal enhancer will also come out. I hope that our company will continue to develop, innovate and serve more customers

Contact



CONTACT: Anna

Whatsapp +86
15919436067

Wechat 15919436067

扫一扫上面的二维码图案，加我微信

Whatsapp

+86 15919436067


Wechat

15919436067

 **Shenzhen Jiayi Technology Co., Ltd.**

 +86 18825260857

 18825260857@163.com

 signals-booster.com

Factory Building 407, Building B, No. 41, Lixin Road, Danzhutou Community, Nanwan Street, Longgang District,
Shenzhen City, Guangdong Province, PR China Zip 518000