



850mhz Gsm Amplifier And Booster 94db Mobile Gsm Dcs Repeater

Our Product Introduction

for more products please visit us on signals-booster.com

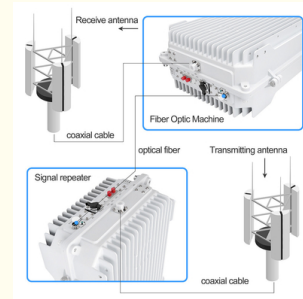
Basic Information

- Place of Origin: GUANGDONG
- Brand Name: GREEMBLT
- Model Number: JY825-10W-40dbm
- Price: \$571.20/pieces 1-9 pieces
- Packaging Details: Normal Carton Package
- Supply Ability: 1000 Set/Sets per Week

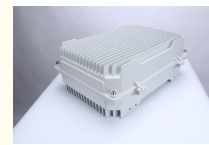
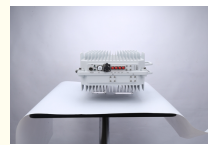
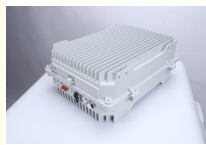


Product Specification

- Type: Universal
- Network: 4g, 3G, 2G, GSM DCS WCDMA 2G 3G 4G
- Product Name: Optical Fiber Signal Repeater
- Mobile Signal Booster: Optical Fiber Signal Repeater
- Function: Signal Extender
- Gain-dBi: 94dB±1.5dB
- Max Output Power: 40dBm±1.5dB
- Optical Power (JBM): 9
- Coverage: 40000sqm
- Operating Temperature: -20 ~55 ;
- Package Size: 420*400*300mm
- Highlight: 850mhz gsm amplifier and booster, 94db mobile gsm dcs repeater, gsm amplifier and booster 94db



More Images



Product Description

Optical Fiber Cell Phone Signal Booster 850mhz Far-end Signal Strength Amplifier 94db

Product Description

Electrical Specifications

Model

JY825

Frequency Range-MHz

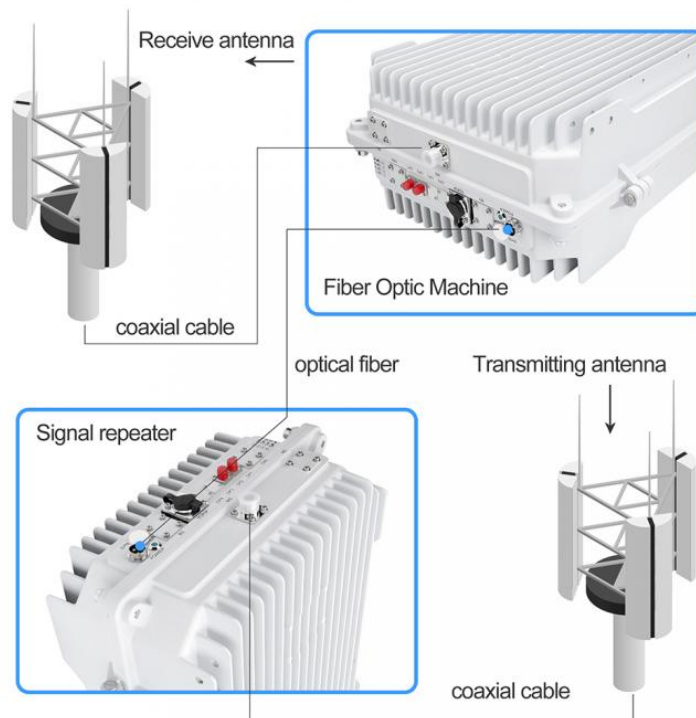
700MHz: Uplink:699-716MHz Downlink:729-726MHz
850MHz: Uplink :824-849MHz Downlink::869-894MHz
800MHz: Uplink :832-862MHz Downlink::791-821MHz
900MHz: Uplink : 880-915MHz Downlink::925-960MHz
1700MHz: Uplink :1710-1755MHz Downlink::2100-2155MHz
1800MHz: Uplink : 1710-1785MHz Downlink::1805-1880MHz
1900MHz : Uplink :1850-1910MHz Downlink::1930-1990MHz
2100MHz: Uplink : 1920-1980MHz Downlink::2110-2170MHz
2600MHz : Uplink : 2500-2570MHz Downlink::2620-2690MHz
2300MHz : Uplink : 2300MHz Downlink::2400MHz
2500MHz : Uplink : 2495MHz Downlink:2695MHz
3500MHZ: Uplink : 3300MHz Downlink::4200MHz

Our Product Introduction

In-band intermodulation attenuation out-of-band (off-frequency)	S-36dBc/30KHz 9KHz-1GHz -36dBm/100kHz
CSM/DCS	Strip edge 2.5y outside/1GHz-12.75GHz -33dBm/IM2
Standing wave ratio of input and output voltage	S1.5
Time delay (us)	< 5
Time delay adjustment range (US)	> 100
Optical power (JBm)	9
Light Receiving Sensitivity (DBM)	20
Light transmission distance (km)	> 20
Power supply	Near and far end machine: AC220V±20%,50± 5HZ
Protection class	IP65 1, working environment temperature :-20 ~55 ; 2, working environment humidity: 15% ~ 95% 3 pressure: 70-106KP: 4, protection level: waterproof and dustproof performance in line with the 1P65 standard
The work environment	



Accessories & Installation



How it Installs:

1. Locate Signal Walk around your building and see which side receives the best signal on your phone using your bars, or free signal meter apps. **2. Outdoor Antenna** Install the outside antenna on your roof as high as possible, pointed toward your carrier's cell tower and on the side of your home that receives the strongest cellular signal.
(Tip: It's important that the Outside Antenna should be on or near the edge of the roof pointing away from the house to the cell tower and NOT pointing across the roof since it may cause interference with the Inside Antenna.) **3. Connect Cable** Connect the included cable to the outside antenna and run it inside your home to the port labeled "outside antenna" on the booster. **4. Indoor Antenna** Place the indoor

antenna in an area where you typically had poor signal. Then run a cable to the "inside antenna" port on your booster.

(Tip: Having enough separation between the two antennas prevents oscillation. Make sure there are at least 10 feet vertical and 32 feet horizontal distance between the two.)

5. Connect Power Once you have decided on the ideal location of each component, power the booster with the power supply

Application

UNIVERSAL COVERAGE

INTELLIGENT AMPLIFICATION SIGNAL, SUITABLE FOR VARIOUS PLACES,
SIGNAL INSTANT FULL GRID

...



• THE CITY



• CITIES AND TOWNS



• INTENSIVE FLOOR



• HIGH-RISE OFFICE BUILDING



• THE BASEMENT



• VILLA



• THE MOUNTAINS




• RURAL

 **Shenzhen Jiayi Technology Co., Ltd.**

 +86 18825260857

 18825260857@163.com

 signals-booster.com

Factory Building 407, Building B, No. 41, Lixin Road, Danzhotou Community, Nanwan Street, Longgang District,
Shenzhen City, Guangdong Province, PR China Zip 518000