



## Outdoor Fiber Optic Signal Amplifier DCS 1800MHZ Mobile Phone Signal Booster

Our Product Introduction

for more products please visit us on [signals-booster.com](http://signals-booster.com)

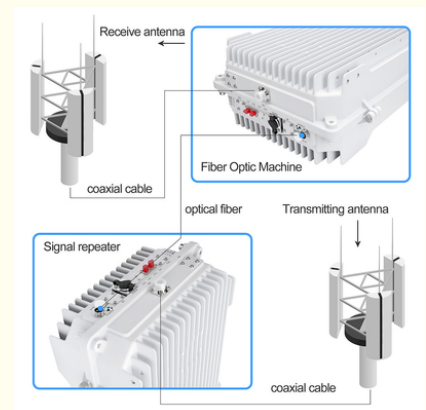
### Basic Information

- Place of Origin: GUANGDONG
- Brand Name: GREEMBLT
- Model Number: JY825-10W-40dbm
- Price: \$571.20/pieces 1-9 pieces
- Packaging Details: Normal Carton Package
- Supply Ability: 1000 Set/Sets per Week

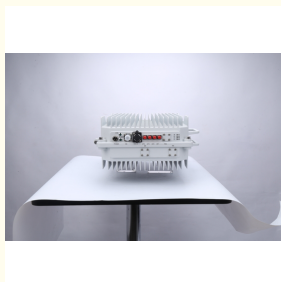


### Product Specification

- Type: Universal
- Network: 4g, 3G, 2G, GSM DCS WCDMA 2G 3G 4G
- Product Name: Optical Fiber Signal Repeater
- Mobile Signal Booster: Optical Fiber Signal Repeater
- Function: Signal Extender
- Gain-dBi: 94dB $\pm$ 1.5dB
- Max Output Power: 40dBm $\pm$ 1.5dB
- Optical Power (JBm): 9
- Coverage: 40000sqm
- Operating Temperature: -20 ~55 ;
- Package Size: 420\*400\*300mm
- Highlight: outdoor fiber optic signal amplifier,  
fiber optic signal amplifier dcs,  
1800mhz mobile phone signal booster



### More Images



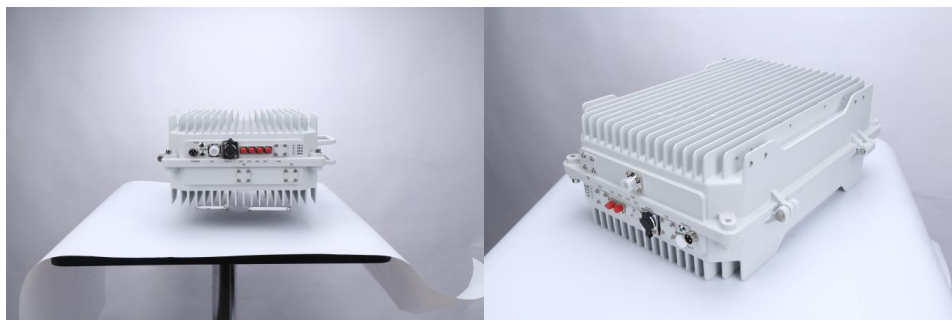
## Product Description

10 Watts DCS 1800MHZ Outdoor power Optical Fiber Network Signal Amplifier -20C-55C mobile phone signal booster

## Product Description

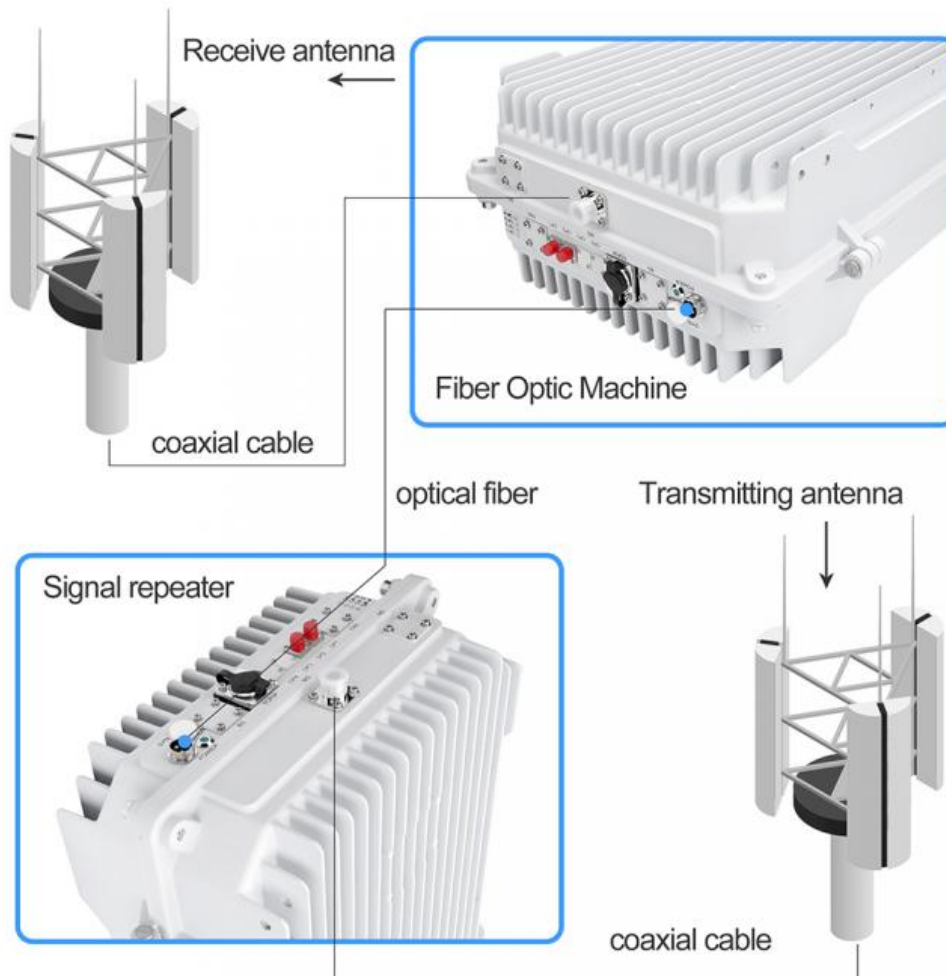
### Electrical Specifications

<b>Model</b>	JY825
<b>Frequency Range-MHz</b>	700MHz: Uplink:699-716MHz Downlink:729-726MHz 850MHz: Uplink :824-849MHz Downlink::869-894MHz 800MHz: Uplink :832-862MHz Downlink::791-821MHz 900MHz: Uplink : 880-915MHz Downlink::925-960MHz 1700MHz: Uplink :1710-1755MHz Downlink::2100-2155MHz 1800MHz: Uplink : 1710-1785MHz Downlink::1805-1880MHz 1900MHz : Uplink :1850-1910Mhz Downlink::1930-1990MHz 2100MHz: Uplink : 1920-1980MHz Downlink::2110-2170MHz 2600MHz : Uplink : 2500-2570MHz Downlink::2620-2690MHz 2300MHz : Uplink : 2300MHz Downlink::2400MHz 2500Mhz : Uplink : 2495MHz Downlink:2695MHz 3500MHZ: Uplink : 3300MHz Downlink::4200MHz
<b>In-band intermodulation attenuation out-of-band (off-frequency)</b>	S-36dBc/30Kz 9KHz-1GHz -36dBm/100kHz
<b>CSM/DCS</b>	Strip edge 2.5y outside/1GHz-12. 75GHz -33dBm/IM2
<b>Standing wave ratio of input and output voltage</b>	S1.5
<b>Time delay (us)</b>	< 5
<b>Time delay adjustment range (US)</b>	> 100
<b>Optical power (JBm)</b>	9
<b>Light Receiving Sensitivity (DBM)</b>	20
<b>Light transmission distance (km)</b>	> 20
<b>Power supply</b>	Near and far end machine: AC220V±20%,50± 5HZ
<b>Protection class</b>	IP65
<b>The work environment</b>	1, working environment temperature :-20 ~55 ; 2, working environment humidity: 15% ~ 95% 3 pressure: 70-106KP: 4, protection level: waterproof and dustproof performance in line with the 1P65 standard





## Accessories & Installation



### How it Installs:

**1. Locate Signal** Walk around your building and see which side receives the best signal on your phone using your bars, or free signal meter apps. **2. Outdoor Antenna** Install the outside antenna on your roof as high as possible, pointed toward your carrier's cell tower and on the side of your home that receives the strongest cellular signal.

(Tip: It's important that the Outside Antenna should be on or near the edge of the roof pointing away from the house to the cell tower and NOT pointing across the roof since it may cause interference with the Inside Antenna. ) **3. Connect Cable** Connect the included cable to the outside antenna and run it inside your home to the port labeled "outside antenna" on the booster. **4. Indoor Antenna** Place the indoor antenna in an area where you typically had poor signal. Then run a cable to the "inside antenna" port on your booster.

(Tip: Having enough separation between the two antennas prevents oscillation. Make sure there are at least 10 feet vertical and 32 feet horizontal distance between the two. ) **5. Connect Power** Once you have decided on the ideal location of each component, power the booster with the power supply

## Application

# UNIVERSAL COVERAGE

INTELLIGENT AMPLIFICATION SIGNAL, SUITABLE FOR VARIOUS PLACES,  
SIGNAL INSTANT FULL GRID

• • •



• THE CITY



• CITIES AND TOWNS



• INTENSIVE FLOOR



• HIGH-RISE OFFICE BUILDING



• THE BASEMENT



• VILLA



• THE MOUNTAINS



• RURAL



**Shenzhen Jiayi Technology Co., Ltd.**



+86 18825260857



18825260857@163.com



signals-booster.com

Factory Building 407, Building B, No. 41, Lixin Road, Danzhutou Community, Nanwan Street, Longgang District,  
Shenzhen City, Guangdong Province, PR China Zip 518000