



5W 37dbm Supper Power 2g GSM 900MHZ Cellular Signal Booster with Optical Power JBm 9

Our Product Introduction

for more products please visit us on signals-booster.com

Basic Information

- Place of Origin: GUANGDONG
- Brand Name: GREEMBLT
- Model Number: JY825-5W-37dbm
- Price: \$428.60/pieces 1-9 pieces
- Packaging Details: Normal Carton Package
- Supply Ability: 1000 Set/Sets per Week



Product Specification

- Type: Universal
- Network: 4g, 3G, 2G, GSM DCS WCDMA 2G 3G 4G
- Product Name: High Power Mobile Signal Booster
- Mobile Signal Booster: High Power Mobile Signal Booster
- Function: Signal Extender
- Gain-dBi: 90dB±1.5dB
- Max Output Power: 37dBm±1.5dB
- Optical Power (JBm): 9
- Coverage: 20000sqm
- Operating Temperature: -20 ~55 ;
- Package Size: 420*400*300mm
- Highlight: 5w signal booster, 5w network booster, 37dbm signal booster



More Images



Product Description

Stronger Signals, Smoother Communication



Product Description

Electrical Specifications

| | |
|--|---|
| Model | JY825 |
| Frequency Range-MHz | 700MHz Uplink:699-716MHz Downlink 729-726MHz 850MHz: Uplink :824-849MHz Downlink::869-894MHz 800MHz: Uplink :832-862MHz Downlink::791-821MHz 900MHz: Uplink : 880-915MHz Downlink::925-960MHz 1700MHz: Uplink :1710-1755MHz Downlink::2100-2155MHz 1800MHz: Uplink : 1710-1785MHz Downlink::1805-1880MHz 1900MHz : Uplink :1850-1910Mhz Downlink::1930-1990MHz 2100MHz: Uplink : 1920-1980MHz Downlink::2110-2170MHz 2600MHz : Uplink : 2500-2570MHz Downlink::2620-2690MHz 2300MHz : Uplink : 2300MHz Downlink::2400MHz 2500Mhz : Uplink : 2495MHz Downlink:2695MHz 3500MHZ: Uplink : 3300MHz Downlink::4200MHz |
| In-band intermodulation attenuation out-of-band (off-frequency) | S-36dBc/30Kz 9KHz-1GHz -36dBm/100kHz |
| CSM/DCS | Strip edge 2.5y outside/1GHz-12. 75GHz -33dBm/IM2 |
| Standing wave ratio of input and output voltage | S1.5 |
| Time delay (us) | < 5 |
| Time delay adjustment range (US) | > 100 |
| Optical power (JBm) | 9 |
| Light Receiving Sensitivity (DBM) | 20 |
| Light transmission distance (km) | > 20 |
| Power supply | Near and far end machine: AC220V±20%,50± 511Z |
| Monitor the way | RJ-45 1, working environment temperature :-20 ~55 ; 2, working environment humidity: 15% ~ 95% 3 pressure: 70-106KP: |
| The work environment | 4, protection level: waterproof and dustproof performance in line with the 1P65 standard |



Accessories & Installation

Villa signal coverage solution



How it Installs:

1. Locate Signal Walk around your building and see which side receives the best signal on your phone using your bars, or free signal meter apps. **2. Outdoor Antenna** Install the outside antenna on your roof as high as possible, pointed toward your carrier's cell tower and on the side of your home that receives the strongest cellular signal.

(Tip: It's important that the Outside Antenna should be on or near the edge of the roof pointing away from the house to the cell tower and NOT pointing across the roof since it may cause interference with the Inside Antenna.) **3. Connect Cable** Connect the included cable to the outside antenna and run it inside your home to the port labeled "outside antenna" on the booster. **4. Indoor Antenna** Place the indoor antenna in an area where you typically had poor signal. Then run a cable to the "inside antenna" port on your booster.

(Tip: Having enough separation between the two antennas prevents oscillation. Make sure there are at least 10 feet vertical and 32 feet horizontal distance between the two.) **5. Connect Power** Once you have decided on the ideal location of each component, power the booster with the power supply

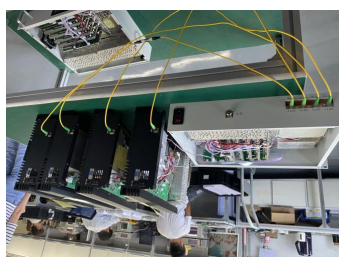
Company Introduction

Shenzhen Jiayi Technology Co., Ltd. is a global leading manufacturer of mobile signal amplifiers, dedicated to providing exceptional communication enhancement solutions for commission agent customers worldwide. Our high-performance signal amplifiers significantly improve call quality, data speeds, and network connectivity, regardless of our clients' locations.

We have a global presence and have established long-term partnerships with a wide range of B2B clients, including telecommunications operators, enterprises, hotels, and government agencies. Our outstanding products and customizable solutions have earned us an excellent reputation in the market.

At Shenzhen Jiayi Technology Co., Ltd., our professional team consists of experts and engineers from the telecommunications industry, committed to providing the best technical support. We are continuously innovating to meet the evolving communication needs of our clients while prioritizing customer satisfaction.

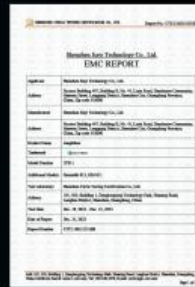
If you are seeking a high-quality manufacturer of mobile signal amplifiers, Shenzhen Jiayi Technology Co., Ltd. is your preferred partner. We look forward to collaborating with you to enhance your communication experience.





Certifications

Certifications & Awards

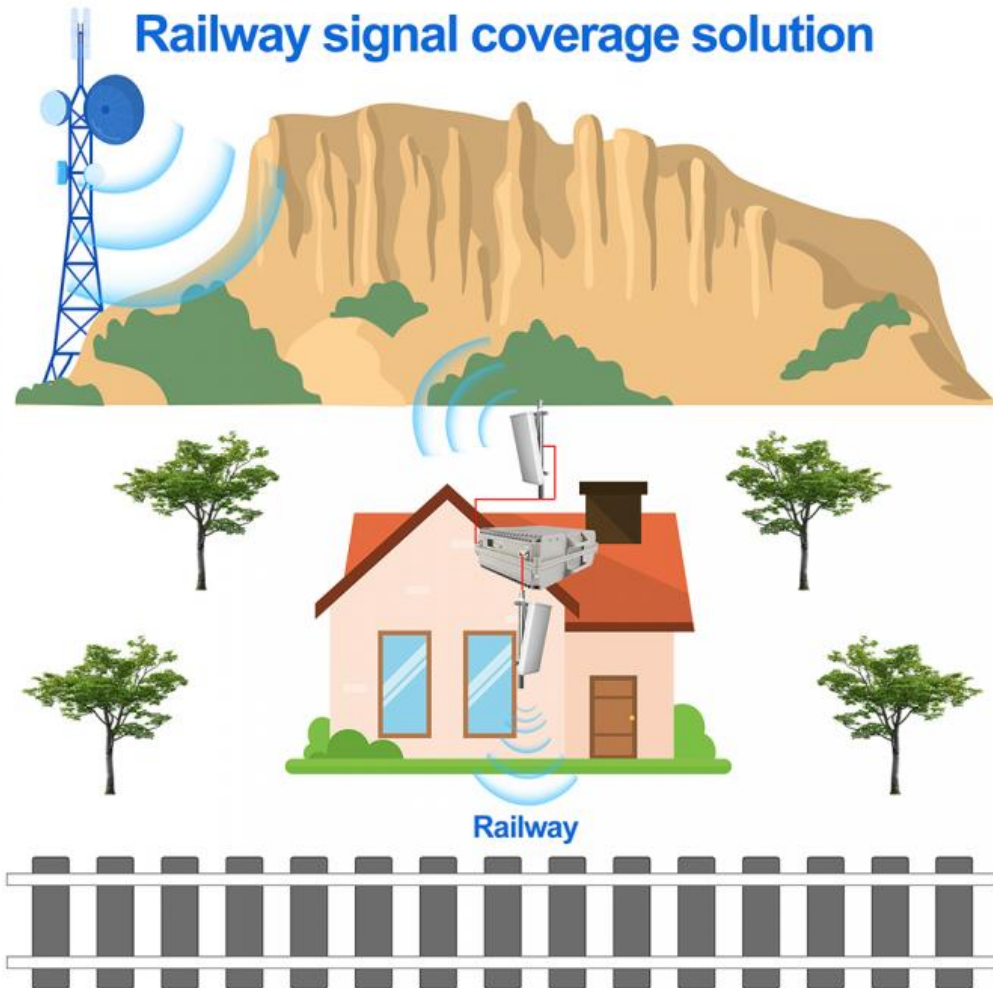


Our Customers



Application

Railway signal coverage solution



UNIVERSAL COVERAGE

INTELLIGENT AMPLIFICATION SIGNAL, SUITABLE FOR VARIOUS PLACES,
SIGNAL INSTANT FULL GRID

...



• THE CITY



• CITIES AND TOWNS



• INTENSIVE FLOOR



• HIGH-RISE OFFICE BUILDING



• THE BASEMENT



• VILLA

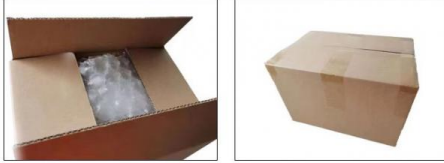


• THE MOUNTAINS



• RURAL

Packing & Delivery



PACKAGING CHOICE

We will pack the products carefully and safely deliver them to your hands.
Our express can be sent to various places and can be delivered.



FAQ

1. What countries is this mobile signal amplifier suitable for?

Our mobile signal amplifier is compatible with usage in various countries and regions worldwide. Regardless of your location, you can enjoy enhanced signal coverage.

2. Does installing this signal amplifier require professional skills?

No professional skills are necessary. We provide a detailed installation guide with simple and clear steps. If you encounter any issues, our customer service team is always ready to assist you.

3. Does this amplifier support 4G/LTE signals?

Yes, our mobile signal amplifier supports not only 2G and 3G signals but also 4G/LTE networks, ensuring improved signal quality in various network environments.

4. Can it be used for multiple phones simultaneously?

Yes, our signal amplifier can simultaneously support multiple phones, tablets, and other devices, providing stronger signals whether you're at home or in the office.

5. Will the signal improvement be immediately noticeable after installing the amplifier?

Yes, once the amplifier is installed and set up according to the guide, you should experience an immediate enhancement in signal quality. However, ensure you install the amplifier in an appropriate location for optimal results.

6. Are additional accessories needed to complete the installation?

We provide a complete set of installation accessories, so you typically don't need to purchase additional items. Everything is included in our package to ensure a smooth installation process.

7. Is this amplifier legal?

Our mobile signal amplifier complies with international telecommunications standards and is legal for use in various countries. However, please note that you might need specific licenses or approvals in certain regions.

8. Can this amplifier be used in vehicles?

Yes, our mobile signal amplifier is suitable for use inside vehicles. It can enhance your signal while traveling, ensuring better connectivity on your journeys.

9. How are post-sales issues or warranties handled?

We offer a limited product warranty period, and if you encounter any problems during usage, feel free to contact our customer service team. We are dedicated to resolving any post-sales issues you may have.

10. Is this mobile signal amplifier suitable for large commercial spaces?

Yes, our signal amplifier is suitable not only for homes and small offices but also for large commercial spaces such as hotels, conference centers, and warehouses. We have different amplifier models to meet various signal range requirements.

Contact Us

If you are interested in our signal booster and need more details, please feel free to contact with me. Thanks

Coco Wu

Sales Manager



Shenzhen Jiayi Technology Co., Ltd.



www.greemblt.com



+86 18025474587



+86 18025474587



coco@jiayi-technology.com



Factory Building 407, Building B, No. 41, Lixin Road, Danzhotou Community, Nanwan Street, Longgang District, Shenzhen City, Guangdong Province

Wechat



Whatsapp





+86 18825260857



18825260857@163.com



signals-booster.com

Factory Building 407, Building B, No. 41, Lixin Road, Danzhutou Community, Nanwan Street, Longgang District,
Shenzhen City, Guangdong Province, PR China Zip 518000