



DCS WCDMA 4G Mobile Signal Booster 1900Mhz Fiber Optic Signal Amplifier

Our Product Introduction

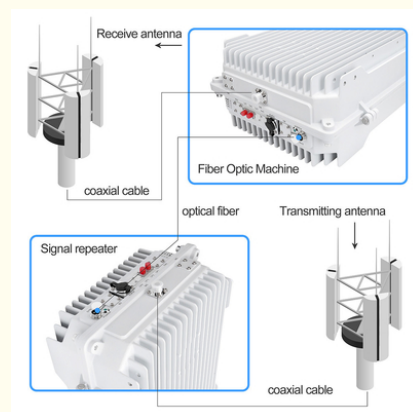
Basic Information

- Place of Origin: GUANGDONG
- Brand Name: GREEMBLT
- Model Number: JY825-5W-37dbm
- Price: \$857.20/pieces 1-9 pieces
- Packaging Details: Normal Carton Package
- Supply Ability: 1000 Set/Sets per Week

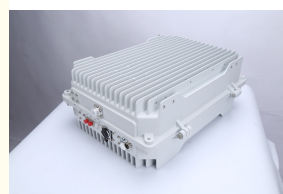
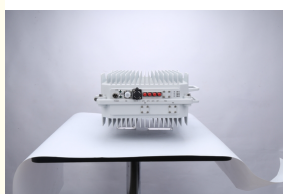
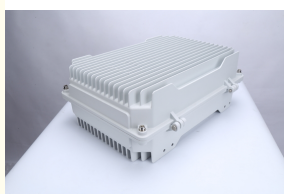


Product Specification

- Type: Universal
- Network: 4g, 3G, 2G, GSM DCS WCDMA 2G 3G 4G
- Product Name: Optical Fiber Signal Repeater
- Mobile Signal Booster: Optical Fiber Signal Repeater
- Function: Signal Extender
- Gain-dBi: 90dB \pm 1.5dB
- Max Output Power: 37dBm \pm 1.5dB
- Optical Power (JBm): 9
- Coverage: 20000sqm
- Operating Temperature: -20 ~55 ;
- Package Size: 420*400*300mm
- Highlight: wcdma 4g mobile signal booster,
4g mobile signal booster 1900mhz,
1900mhz fiber optic signal amplifier



More Images



for more products please visit us on signals-booster.com

Product Description

Universal Mobile Signal Booster Fiber Optic Cell Phone Repeater for 4g 3g DCS WCDMA

Product Description

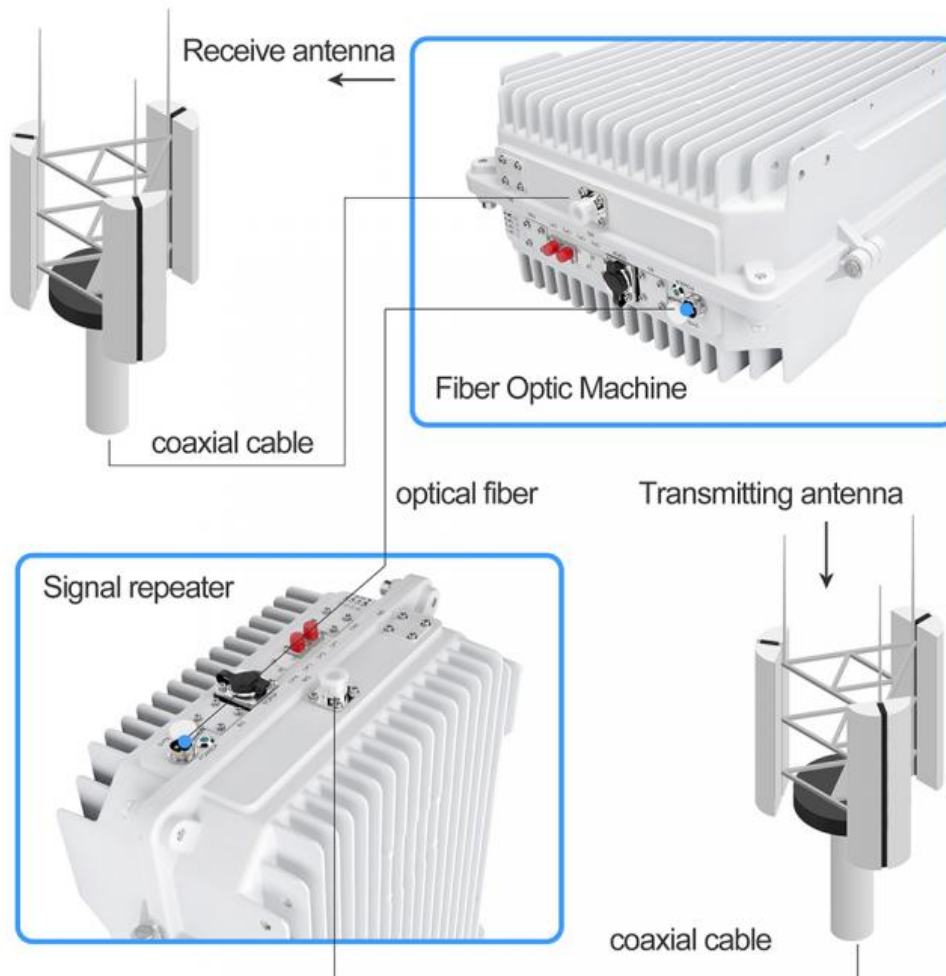
Electrical Specifications

Model	JY825
Frequency Range-MHz	700MHz: Uplink:699-716MHz Downlink:729-726MHz 850MHz: Uplink :824-849MHz Downlink::869-894MHz 800MHz: Uplink :832-862MHz Downlink::791-821MHz 900MHz: Uplink : 880-915MHz Downlink::925-960MHz 1700MHz: Uplink :1710-1755MHz Downlink::2100-2155MHz 1800MHz: Uplink : 1710-1785MHz Downlink::1805-1880MHz 1900MHz : Uplink :1850-1910Mhz Downlink::1930-1990MHz 2100MHz: Uplink : 1920-1980MHz Downlink::2110-2170MHz 2600MHz : Uplink : 2500-2570MHz Downlink::2620-2690MHz 2300MHz : Uplink : 2300MHz Downlink::2400MHz 2500Mhz : Uplink : 2495MHz Downlink:2695MHz 3500MHZ: Uplink : 3300MHz Downlink::4200MHz
In-band intermodulation attenuation out-of-band (off-frequency)	S-36dBc/30Kz 9KHz-1GHz -36dBm/100kHz
CSM/DCS	Strip edge 2.5y outside/1GHz-12. 75GHz -33dBm/IM2
Standing wave ratio of input and output voltage	S1.5
Time delay (us)	< 5
Time delay adjustment range (US)	> 100
Optical power (JBm)	9
Light Receiving Sensitivity (DBM)	20
Light transmission distance (km)	> 20
Power supply	Near and far end machine: AC220V±20%,50± 5HZ
Protection class	IP65
The work environment	1, working environment temperature :-20 ~55 ; 2, working environment humidity: 15% ~ 95% 3 pressure: 70-106KP: 4, protection level: waterproof and dustproof performance in line with the 1P65 standard





Accessories & Installation



How it Installs:

1. Locate Signal Walk around your building and see which side receives the best signal on your phone using your bars, or free signal meter apps. **2. Outdoor Antenna** Install the outside antenna on your roof as high as possible, pointed toward your carrier's cell tower and on the side of your home that receives the strongest cellular signal.

(Tip: It's important that the Outside Antenna should be on or near the edge of the roof pointing away from the house to the cell tower and NOT pointing across the roof since it may cause interference with the Inside Antenna.) **3. Connect Cable** Connect the included cable to the outside antenna and run it inside your home to the port labeled "outside antenna" on the booster. **4. Indoor Antenna** Place the indoor antenna in an area where you typically had poor signal. Then run a cable to the "inside antenna" port on your booster.

(Tip: Having enough separation between the two antennas prevents oscillation. Make sure there are at least 10 feet vertical and 32 feet horizontal distance between the two.) **5. Connect Power** Once you have decided on the ideal location of each component, power the booster with the power supply

Application

UNIVERSAL COVERAGE

INTELLIGENT AMPLIFICATION SIGNAL, SUITABLE FOR VARIOUS PLACES,
SIGNAL INSTANT FULL GRID

...



• THE CITY



• CITIES AND TOWNS



• INTENSIVE FLOOR



• HIGH-RISE OFFICE BUILDING



• THE BASEMENT



• VILLA




• THE MOUNTAINS




• RURAL

1. What countries is this mobile signal amplifier suitable for?

 **Shenzhen Jiayi Technology Co., Ltd.**

 +86 18825260857

 18825260857@163.com

 signals-booster.com

Factory Building 407, Building B, No. 41, Lixin Road, Danzhutou Community, Nanwan Street, Longgang District,
Shenzhen City, Guangdong Province, PR China Zip 518000